

For Research Use Only

PPP1R1A Polyclonal antibody

Catalog Number: 12461-1-AP



Basic Information

Catalog Number:

12461-1-AP

Size:

150ul , Concentration: 500 ug/ml by Nanodrop;

Source:

Rabbit

Isotype:

IgG

Immunogen Catalog Number:

AG3128

GenBank Accession Number:

BC022470

GeneID (NCBI):

5502

UNIPROT ID:

Q13522

Full Name:

protein phosphatase 1, regulatory (inhibitor) subunit 1A

Calculated MW:

171 aa, 19 kDa

Observed MW:

15-18 kDa

Purification Method:

Antigen affinity purification

Recommended Dilutions:

WB 1:500-1:1000

Applications

Tested Applications:

WB, ELISA

Species Specificity:

human, rat

Positive Controls:

WB : HeLa cells, MCF-7 cells, PC-12 cells

Background Information

PPP1R1A, also known as protein phosphatase 1 regulatory subunit 1A, is a gene that plays a crucial role in regulating the activity of protein phosphatase 1 (PP1). As an inhibitor, PPP1R1A binds to PP1, preventing the dephosphorylation of PP1 to other proteins. This gene influences a broad range of cellular functions by maintaining the phosphorylation of specific proteins and is directly involved in glycogen metabolism, cardiac contractility, and cell proliferation. PPP1R1A is considered a key factor in regulating cellular signaling and physiological homeostasis.

Storage

Storage:

Store at -20°C. Stable for one year after shipment.

Storage Buffer:

PBS with 0.02% sodium azide and 50% glycerol pH 7.3.

Aliquoting is unnecessary for -20°C storage

*** 20ul sizes contain 0.1% BSA

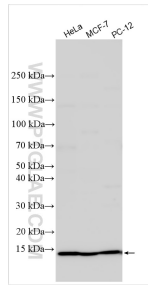
For technical support and original validation data for this product please contact:

T: 1 (888) 4PTGLAB (1-888-478-4522) (toll free in USA), or 1(312) 455-8498 (outside USA)

E: proteintech@ptglab.com
W: ptglab.com

This product is exclusively available under Proteintech Group brand and is not available to purchase from any other manufacturer.

Selected Validation Data



Various lysates were subjected to SDS PAGE followed by western blot with 12461-1-AP (PPP1R1A antibody) at dilution of 1:500 incubated at room temperature for 1.5 hours.