

For Research Use Only

# CDCA8 Polyclonal antibody

Catalog Number: 12465-1-AP **7 Publications**



## Basic Information

<b>Catalog Number:</b> 12465-1-AP	<b>GenBank Accession Number:</b> BC016944	<b>Purification Method:</b> Antigen affinity purification
<b>Size:</b> 150ul , Concentration: 450 µg/ml by Nanodrop and 293 µg/ml by Bradford method using BSA as the standard;	<b>GeneID (NCBI):</b> 55143	<b>Recommended Dilutions:</b> WB 1:500-1:1000 IHC 1:50-1:500 IF 1:50-1:500
<b>Source:</b> Rabbit	<b>Full Name:</b> cell division cycle associated 8	
<b>Isotype:</b> IgG	<b>Calculated MW:</b> 280 aa, 31 kDa	
<b>Immunogen Catalog Number:</b> AG3136	<b>Observed MW:</b> 38-40 kDa	

## Applications

<b>Tested Applications:</b> IF, IHC, WB, ELISA	<b>Positive Controls:</b> WB : A549 cells, mouse kidney tissue IHC : human lung cancer tissue, IF : HeLa cells,
<b>Cited Applications:</b> IF, IHC, WB	
<b>Species Specificity:</b> human, mouse, rat	
<b>Cited Species:</b> human, mouse	
<b>Note-IHC: suggested antigen retrieval with TE buffer pH 9.0; (*) Alternatively, antigen retrieval may be performed with citrate buffer pH 6.0</b>	

## Background Information

CDCA8, also named as Borealin, Dasra-B and PESCRG3, is a component of the chromosomal passenger complex (CPC), a complex that acts as a key regulator of mitosis. This protein can be migrated to 35-40 kDa with phosphor modification or ~50 kDa with SUMO modification.

## Notable Publications

Author	Pubmed ID	Journal	Application
Xiao-Han Cui	34741389	J Cell Mol Med	WB,IHC
Jeremy G Carlton	22422861	Science	IF
Haojie Li	35930080	Cell Mol Life Sci	WB

## Storage

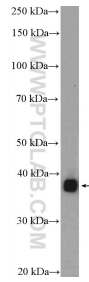
**Storage:**  
Store at -20°C. Stable for one year after shipment.  
**Storage Buffer:**  
PBS with 0.02% sodium azide and 50% glycerol pH 7.3.  
Aliquoting is unnecessary for -20°C storage

\*\*\* 20ul sizes contain 0.1% BSA

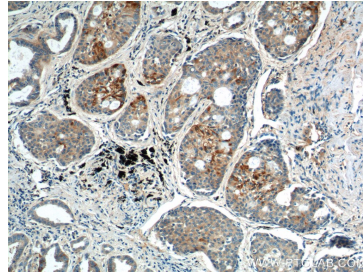
For technical support and original validation data for this product please contact:  
T: 1 (888) 4PTGLAB (1-888-478-4522) (toll free in USA), or 1(312) 455-8498 (outside USA)  
E: proteintech@ptglab.com  
W: ptglab.com

This product is exclusively available under Proteintech Group brand and is not available to purchase from any other manufacturer.

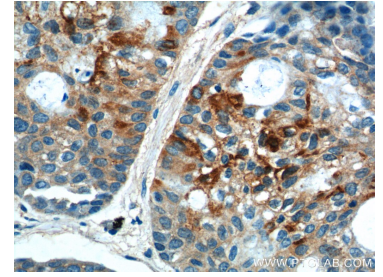
## Selected Validation Data



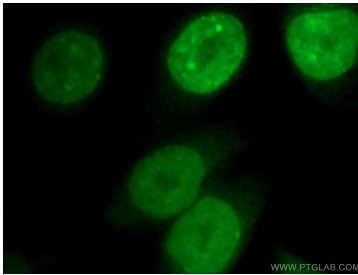
A549 cells were subjected to SDS PAGE followed by western blot with 12465-1-AP (CDCA8 Antibody) at dilution of 1:600 incubated at room temperature for 1.5 hours.



Immunohistochemical analysis of paraffin-embedded human lung cancer tissue slide using 12465-1-AP (CDCA8 Antibody) at dilution of 1:200 (under 10x lens).



Immunohistochemical analysis of paraffin-embedded human lung cancer tissue slide using 12465-1-AP (CDCA8 Antibody) at dilution of 1:200 (under 40x lens).



Immunofluorescent analysis of (4% PFA) fixed HeLa cells using 12465-1-AP (CDCA8 antibody) at dilution of 1:50 and Alexa Fluor 488-Conjugated AffiniPure Goat Anti-Rabbit IgG(H+L).