

For Research Use Only

PANK1/2/3 Polyclonal antibody

Catalog Number: 12466-1-AP **1 Publications**



Basic Information

Catalog Number: 12466-1-AP	GenBank Accession Number: BC013705	Purification Method: Antigen affinity purification
Size: 150ul , Concentration: 200 µg/ml by Nanodrop and 200 µg/ml by Bradford method using BSA as the standard;	GeneID (NCBI): 79646	Recommended Dilutions: WB 1:500-1:2000 IHC 1:20-1:200
Source: Rabbit	Full Name: pantothenate kinase 3	
Isotype: IgG	Calculated MW: 370 aa, 41 kDa	
Immunogen Catalog Number: AG3140	Observed MW: 41 kDa	

Applications

Tested Applications: IHC, WB, ELISA	Positive Controls: WB : HepG2 cells, IHC : human hepatocirrhosis tissue, human breast cancer tissue, human liver cancer tissue
Cited Applications: WB	
Species Specificity: human	
Cited Species: sheep	
Note-IHC: suggested antigen retrieval with TE buffer pH 9.0; (*) Alternatively, antigen retrieval may be performed with citrate buffer pH 6.0	

Background Information

Notable Publications

Author	Pubmed ID	Journal	Application
Zhiyun Hao	36555241	Int J Mol Sci	WB

Storage

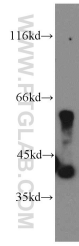
Storage:
Store at -20°C. Stable for one year after shipment.
Storage Buffer:
PBS with 0.02% sodium azide and 50% glycerol pH 7.3.
Aliquoting is unnecessary for -20°C storage

*** 20ul sizes contain 0.1% BSA

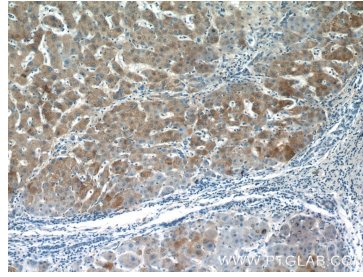
For technical support and original validation data for this product please contact:
T: 1 (888) 4PTGLAB (1-888-478-4522) (toll free in USA), or 1(312) 455-8498 (outside USA) E: proteintech@ptglab.com W: ptglab.com

This product is exclusively available under Proteintech Group brand and is not available to purchase from any other manufacturer.

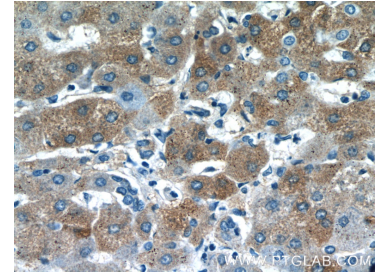
Selected Validation Data



HepG2 cells were subjected to SDS PAGE followed by western blot with 12466-1-AP (PANK1/2/3 antibody) at dilution of 1:500 incubated at room temperature for 1.5 hours.



Immunohistochemical analysis of paraffin-embedded human hepatocirrhosis tissue slide using 12466-1-AP (PANK1/2/3 antibody) at dilution of 1:50 (under 10x lens).



Immunohistochemical analysis of paraffin-embedded human hepatocirrhosis tissue slide using 12466-1-AP (PANK1/2/3 antibody) at dilution of 1:50 (under 40x lens).