

For Research Use Only

RHBDL2 Polyclonal antibody

Catalog Number: 12467-1-AP

Featured Product

6 Publications



Basic Information

Catalog Number:

12467-1-AP

Size:

150ul , Concentration: 450 ug/ml by Nanodrop and 233 ug/ml by Bradford method using BSA as the standard;

Source:

Rabbit

Isotype:

IgG

Immunogen Catalog Number:

AG3142

GenBank Accession Number:

BC013103

GeneID (NCBI):

54933

UNIPROT ID:

Q9NX52

Full Name:

rhomboid, veinlet-like 2 (Drosophila)

Calculated MW:

303 aa, 34 kDa

Observed MW:

34-37 kDa

Purification Method:

Antigen affinity purification

Recommended Dilutions:

WB 1:500-1:1000

Applications

Tested Applications:

WB, ELISA

Cited Applications:

WB, IHC, IF

Species Specificity:

human

Cited Species:

human, mouse

Positive Controls:

WB : HeLa cells,

Notable Publications

Author	Pubmed ID	Journal	Application
Chiara Battistini	31783481	Int J Mol Sci	WB,IF
Adam G Grieve	34800360	Mol Cell	WB
Shiyu Chen	36351890	Cell Death Dis	WB,IHC,IF

Storage

Storage:

Store at -20°C. Stable for one year after shipment.

Storage Buffer:

PBS with 0.02% sodium azide and 50% glycerol pH 7.3.

Aliquoting is unnecessary for -20°C storage

*** 20ul sizes contain 0.1% BSA

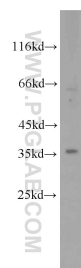
For technical support and original validation data for this product please contact:

T: 1 (888) 4PTGLAB (1-888-478-4522) (toll free in USA), or 1(312) 455-8498 (outside USA)

E: proteintech@ptglab.com
W: ptglab.com

This product is exclusively available under Proteintech Group brand and is not available to purchase from any other manufacturer.

Selected Validation Data



HeLa cells were subjected to SDS PAGE followed by western blot with 12467-1-AP (RHBDL2 antibody) at dilution of 1:500 incubated at room temperature for 1.5 hours.