

For Research Use Only

PIP4K2A Polyclonal antibody, PBS Only

Catalog Number: 12469-1-PBS

Featured Product



Basic Information

Catalog Number:

12469-1-PBS

Size:

100ug, Concentration: 1mg/ml by Nanodrop;

Source:

Rabbit

Isotype:

IgG

Immunogen Catalog Number:

AG3152

GenBank Accession Number:

BC018034

GeneID (NCBI):

5305

UNIPROT ID:

P48426

Full Name:

phosphatidylinositol-5-phosphate 4-kinase, type II, alpha

Calculated MW:

406 aa, 46 kDa

Observed MW:

46 kDa

Purification Method:

Antigen affinity purification

Applications

Tested Applications:

WB, IHC, IF/ICC, IP, ELISA

Species Specificity:

human, mouse, rat

Storage

Storage:

Store at -80°C.

Storage Buffer:

PBS Only

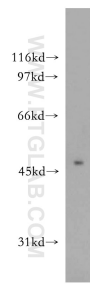
For technical support and original validation data for this product please contact:

T: 1 (888) 4PTGLAB (1-888-478-4522) (toll free in USA), or 1(312) 455-8498 (outside USA)

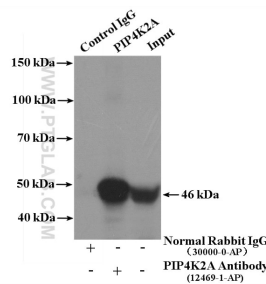
E: proteintech@ptglab.com
W: ptglab.com

This product is exclusively available under Proteintech Group brand and is not available to purchase from any other manufacturer.

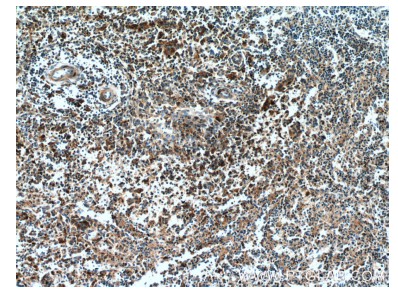
Selected Validation Data



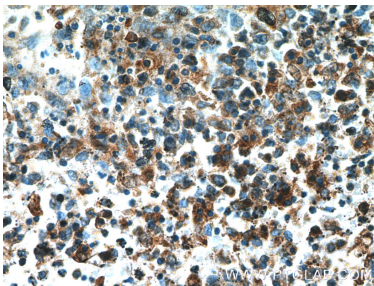
mouse brain tissue were subjected to SDS PAGE followed by western blot with 12469-1-AP (PIP4K2A antibody) at dilution of 1:500 incubated at room temperature for 1.5 hours. This data was developed using the same antibody clone with 12469-1-PBS in a different storage buffer formulation.



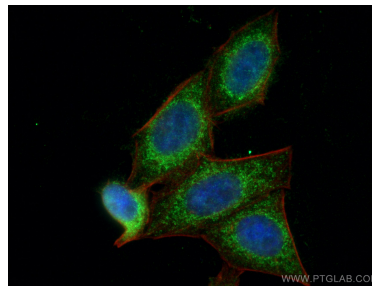
IP result of anti-PIP4K2A (IP:12469-1-AP, 4ug; Detection:12469-1-AP 1:500) with mouse brain tissue lysate 4400ug. This data was developed using the same antibody clone with 12469-1-PBS in a different storage buffer formulation.



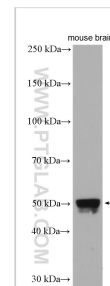
Immunohistochemical analysis of paraffin-embedded human spleen tissue slide using 12469-1-AP (PIP4K2A Antibody) at dilution of 1:200 (under 10x lens). This data was developed using the same antibody clone with 12469-1-PBS in a different storage buffer formulation.



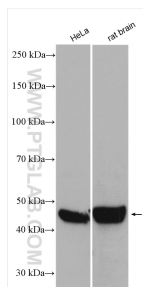
Immunohistochemical analysis of paraffin-embedded human spleen tissue slide using 12469-1-AP (PIP4K2A Antibody) at dilution of 1:200 (under 40x lens). This data was developed using the same antibody clone with 12469-1-PBS in a different storage buffer formulation.



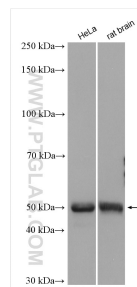
Immunofluorescent analysis of (4% PFA) fixed HepG2 cells using PIP4K2A antibody (12469-1-AP) at dilution of 1:200 and CoralLite®488-Conjugated AffiniPure Goat Anti-Rabbit IgG(H+L), CL594-Phalloidin (black). This data was developed using the same antibody clone with 12469-1-PBS in a different storage buffer formulation.



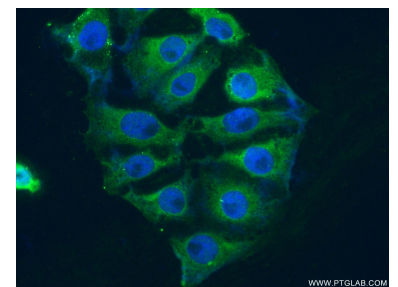
mouse brain tissue were subjected to SDS PAGE followed by western blot with 12469-1-AP (PIP4K2A antibody) at dilution of 1:800 incubated at room temperature for 1.5 hours. This data was developed using the same antibody clone with 12469-1-PBS in a different storage buffer formulation.



Various lysates were subjected to SDS PAGE followed by western blot with 12469-1-AP (PIP4K2A antibody) at dilution of 1:5000 incubated at room temperature for 1.5 hours. This data was developed using the same antibody clone with 12469-1-PBS in a different storage buffer formulation.



Various lysates were subjected to SDS PAGE followed by western blot with 12469-1-AP (PIP4K2A antibody) at dilution of 1:3000 incubated at room temperature for 1.5 hours. This data was developed using the same antibody clone with 12469-1-PBS in a different storage buffer formulation.



Immunofluorescent analysis of (4% PFA) fixed SH-SY5Y cells using 12469-1-AP (PIP4K2A antibody) at dilution of 1:50 and Alexa Fluor 488-conjugated AffiniPure Goat Anti-Rabbit IgG(H+L). This data was developed using the same antibody clone with 12469-1-PBS in a different storage buffer formulation.