

For Research Use Only

RIT2 Polyclonal antibody

Catalog Number: 12473-1-AP



Basic Information

Catalog Number: 12473-1-AP	GenBank Accession Number: BC018060	Purification Method: Antigen affinity purification
Size: 150ul, Concentration: 650 µg/ml by Nanodrop and 147 µg/ml by Bradford method using BSA as the standard;	GeneID (NCBI): 6014	Recommended Dilutions: WB 1:500-1:2000 IP 0.5-4.0 ug for 1.0-3.0 mg of total protein lysate IHC 1:50-1:500
Source: Rabbit	UNIPROT ID: Q99578	
Isotype: IgG	Full Name: Ras-like without CAAX 2	
Immunogen Catalog Number: AG3160	Calculated MW: 217 aa, 25 kDa	
	Observed MW: 25-28 kDa	

Applications

Tested Applications: WB, IP, IHC, ELISA	Positive Controls: WB : rat brain tissue, IP : mouse brain tissue, rat brain tissue IHC : mouse pancreas tissue, mouse brain tissue
Species Specificity: human, mouse, rat	
Note-IHC: suggested antigen retrieval with TE buffer pH 9.0; (*) Alternatively, antigen retrieval may be performed with citrate buffer pH 6.0	

Background Information

RIT2 (AKA: Rin, Ras-like in neurons) is a small, neuronal, ras-like GTPase with enriched expression in SNc DANs (PMID: 38395968). RIT2 is a member of the Ras superfamily that plays important roles in many vital cellular functions, such as differentiation and survival (PMID: 29860660). Rit2 directly interacts with the DA transporter (DAT), and is required for regulated DAT membrane trafficking. In cell culture models, Rit2 is required for EGF- and NGF-mediated neurite outgrowth, NGF-mediated ERK phosphorylation, and cell viability (PMID: 38395968).

Storage

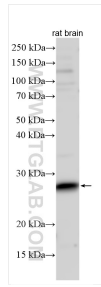
Storage:
Store at -20°C. Stable for one year after shipment.
Storage Buffer:
PBS with 0.02% sodium azide and 50% glycerol pH 7.3.
Aliquoting is unnecessary for -20°C storage

*** 20ul sizes contain 0.1% BSA

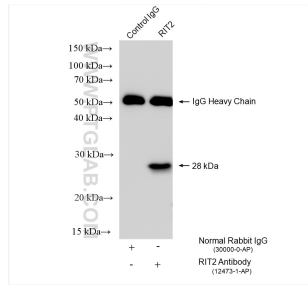
For technical support and original validation data for this product please contact:
T: 1 (888) 4PTGLAB (1-888-478-4522) (toll free in USA), or 1(312) 455-8498 (outside USA)
E: proteintech@ptglab.com
W: ptglab.com

This product is exclusively available under Proteintech Group brand and is not available to purchase from any other manufacturer.

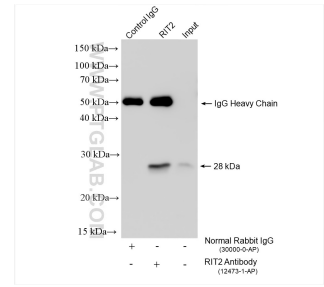
Selected Validation Data



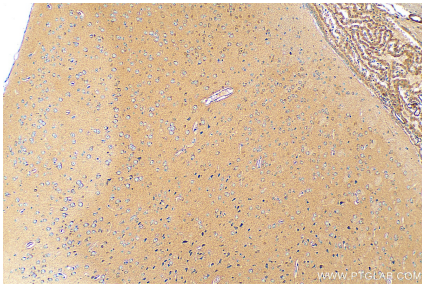
Various lysates were subjected to SDS PAGE followed by western blot with 12473-1-AP (RIT2 antibody) at dilution of 1:1000 incubated at room temperature for 1.5 hours.



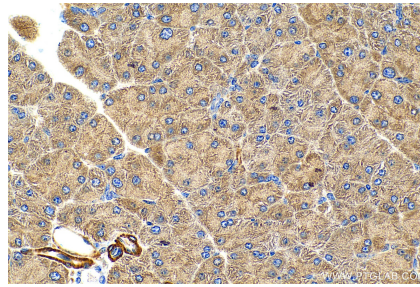
IP result of anti-RIT2 (IP:12473-1-AP, 4ug; Detection:12473-1-AP 1:1000) with mouse brain tissue lysate 1800 ug.



IP result of anti-RIT2 (IP:12473-1-AP, 4ug; Detection:12473-1-AP 1:1000) with rat brain tissue lysate 1120 ug.



Immunohistochemical analysis of paraffin-embedded mouse brain tissue slide using 12473-1-AP (RIT2 antibody) at dilution of 1:200 (under 10x lens). Heat mediated antigen retrieval with Tris-EDTA buffer (pH 9.0).



Immunohistochemical analysis of paraffin-embedded mouse pancreas tissue slide using 12473-1-AP (RIT2 antibody) at dilution of 1:200 (under 40x lens). Heat mediated antigen retrieval with Tris-EDTA buffer (pH 9.0).