

For Research Use Only

TPP1 Polyclonal antibody

Catalog Number: 12479-1-AP **1 Publications**



Basic Information

Catalog Number: 12479-1-AP	GenBank Accession Number: BC014863	Purification Method: Antigen affinity purification
Size: 150ul , Concentration: 450 µg/ml by Nanodrop and 333 µg/ml by Bradford method using BSA as the standard;	GeneID (NCBI): 1200	Recommended Dilutions: WB 1:500-1:1000 IHC 1:20-1:200
Source: Rabbit	Full Name: tripeptidyl peptidase I	
Isotype: IgG	Calculated MW: 563 aa, 61 kDa	
Immunogen Catalog Number: AG3173	Observed MW: 66 kDa	

Applications

Tested Applications: IHC, WB, ELISA	Positive Controls: WB : human colon tissue, IHC : human colon cancer tissue, mouse liver tissue
Cited Applications: WB	
Species Specificity: human, mouse, rat	
Cited Species: mouse	

Note-IHC: suggested antigen retrieval with TE buffer pH 9.0; (*) Alternatively, antigen retrieval may be performed with citrate buffer pH 6.0

Background Information

TRIPETIDYL PEPTIDASE I, TPP1, is a lysosomal exopeptidase that sequentially removes tripeptides from the N termini of proteins. The proenzyme has an apparent molecular mass of 66 kD, and the mature enzyme has an apparent molecular mass of 46 to 48 kD. Defects in TPP1 are the cause of neuronal ceroid lipofuscinosis type 2 (CLN2). This protein distributes widely in all tissues.

Notable Publications

Author	Pubmed ID	Journal	Application
Guang-Jian Jiang	25381886	Mol Reprod Dev	WB

Storage

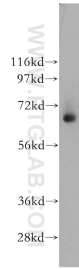
Storage:
Store at -20°C. Stable for one year after shipment.
Storage Buffer:
PBS with 0.02% sodium azide and 50% glycerol pH 7.3.
Aliquoting is unnecessary for -20°C storage

***** 20ul sizes contain 0.1% BSA**

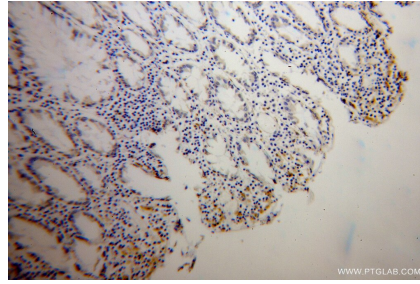
For technical support and original validation data for this product please contact:
T: 1 (888) 4PTGLAB (1-888-478-4522) (toll free in USA), or 1(312) 455-8498 (outside USA)
E: proteintech@ptglab.com
W: ptglab.com

This product is exclusively available under Proteintech Group brand and is not available to purchase from any other manufacturer.

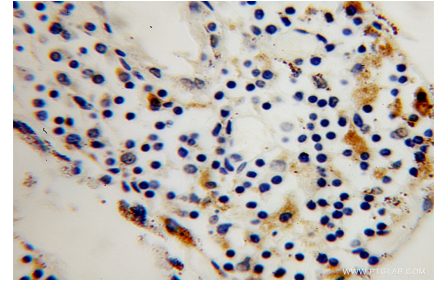
Selected Validation Data



human colon tissue were subjected to SDS PAGE followed by western blot with 12479-1-AP (TPP1 antibody) at dilution of 1:300 incubated at room temperature for 1.5 hours.



Immunohistochemical analysis of paraffin-embedded human colon cancer using 12479-1-AP (TPP1 antibody) at dilution of 1:50 (under 10x lens).



Immunohistochemical analysis of paraffin-embedded human colon cancer using 12479-1-AP (TPP1 antibody) at dilution of 1:50 (under 40x lens).