

For Research Use Only

Ephrin A3 Polyclonal antibody, PBS Only

Catalog Number: 12480-1-PBS

Featured Product



Basic Information

Catalog Number:

12480-1-PBS

Size:

100ug, Concentration: 1 mg/ml by Nanodrop;

Source:

Rabbit

Isotype:

IgG

Immunogen Catalog Number:

AG3188

GenBank Accession Number:

BC017722

GeneID (NCBI):

1944

UNIPROT ID:

P52797

Full Name:

ephrin-A3

Calculated MW:

238 aa, 26 kDa

Observed MW:

26-35 kDa

Purification Method:

Antigen affinity purification

Applications

Tested Applications:

WB, IHC, IF-P, IP, Indirect ELISA

Species Specificity:

human, mouse, rat

Storage

Storage:

Store at -80°C.

Storage Buffer:

PBS only, pH7.3

For technical support and original validation data for this product please contact:

T: 1 (888) 4PTGLAB (1-888-478-4522) (toll free in USA), or 1(312) 455-8498 (outside USA)

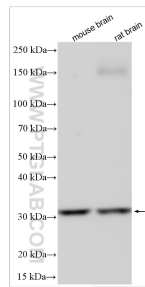
E: proteintech@ptglab.com
W: ptglab.com

This product is exclusively available under Proteintech Group brand and is not available to purchase from any other manufacturer.

Selected Validation Data



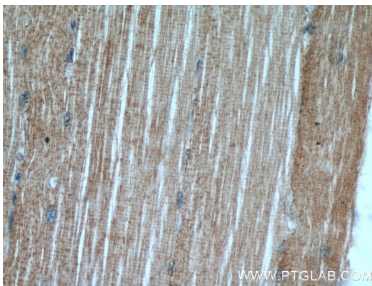
human brain tissue were subjected to SDS PAGE followed by western blot with 12480-1-AP (Ephrin A3 antibody) at dilution of 1:400 incubated at room temperature for 1.5 hours. This data was developed using the same antibody clone with 12480-1-PBS in a different storage buffer formulation.



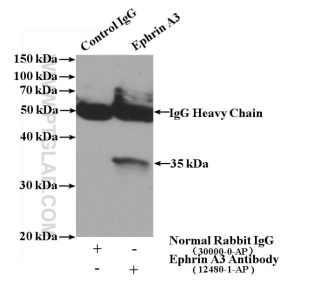
Various lysates were subjected to SDS PAGE followed by western blot with 12480-1-AP (Ephrin A3 antibody) at dilution of 1:1000 incubated at room temperature for 1.5 hours. This data was developed using the same antibody clone with 12480-1-PBS in a different storage buffer formulation.



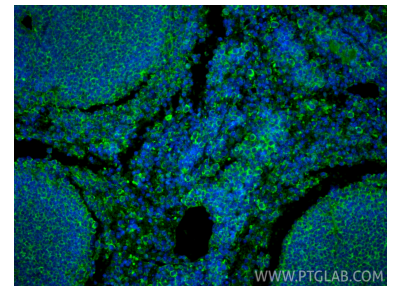
Immunohistochemical analysis of paraffin-embedded human skeletal muscle using 12480-1-AP (Ephrin A3 antibody) at dilution of 1:50 (under 10x lens). This data was developed using the same antibody clone with 12480-1-PBS in a different storage buffer formulation.



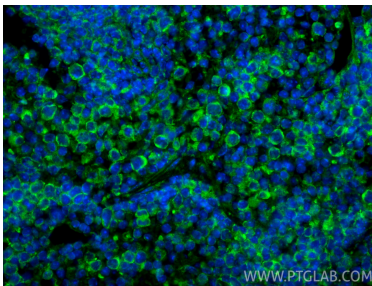
Immunohistochemical analysis of paraffin-embedded human skeletal muscle using 12480-1-AP (Ephrin A3 antibody) at dilution of 1:50 (under 40x lens). This data was developed using the same antibody clone with 12480-1-PBS in a different storage buffer formulation.



IP result of anti-Ephrin A3 (IP:12480-1-AP, 4ug; Detection:12480-1-AP 1:500) with A549 cells lysate 1040ug. This data was developed using the same antibody clone with 12480-1-PBS in a different storage buffer formulation.



Immunofluorescent analysis of (4% PFA) fixed paraffin-embedded mouse spleen tissue using Ephrin A3 antibody (12480-1-AP) at dilution of 1:200 and CoraLite®488-Conjugated Goat Anti-Rabbit IgG(H+L) (SA00013-2). Heat mediated antigen retrieval with Tris-EDTA buffer (pH 9.0). This data was developed using the same antibody clone with 12480-1-PBS in a different storage buffer formulation.



Immunofluorescent analysis of (4% PFA) fixed paraffin-embedded mouse spleen tissue using Ephrin A3 antibody (12480-1-AP) at dilution of 1:200 and CoraLite®488-Conjugated Goat Anti-Rabbit IgG(H+L) (SA00013-2). Heat mediated antigen retrieval with Tris-EDTA buffer (pH 9.0). This data was developed using the same antibody clone with 12480-1-PBS in a different storage buffer formulation.