

For Research Use Only

# CYP46A1 Polyclonal antibody

Catalog Number: 12486-1-AP **13 Publications**



## Basic Information

<b>Catalog Number:</b> 12486-1-AP	<b>GenBank Accession Number:</b> BC022539	<b>Purification Method:</b> Antigen affinity purification
<b>Size:</b> 150ul , Concentration: 350 µg/ml by Nanodrop;	<b>GeneID (NCBI):</b> 10858	<b>Recommended Dilutions:</b> WB 1:500-1:1000 IP 0.5-4.0 ug for 1.0-3.0 mg of total protein lysate IHC 1:50-1:500
<b>Source:</b> Rabbit	<b>Full Name:</b> cytochrome P450, family 46, subfamily A, polypeptide 1	
<b>Isotype:</b> IgG	<b>Calculated MW:</b> 500 aa, 57 kDa	
<b>Immunogen Catalog Number:</b> AG3116	<b>Observed MW:</b> 57 kDa	

## Applications

<b>Tested Applications:</b> IHC, IP, WB, ELISA	<b>Positive Controls:</b>
<b>Cited Applications:</b> IF, IHC, WB	<b>WB :</b> mouse brain tissue, rat brain tissue
<b>Species Specificity:</b> human, mouse, rat	<b>IP :</b> mouse brain tissue,
<b>Cited Species:</b> human, rat, mouse	<b>IHC :</b> mouse brain tissue,

**Note-IHC: suggested antigen retrieval with TE buffer pH 9.0; (\*) Alternatively, antigen retrieval may be performed with citrate buffer pH 6.0**

## Background Information

Cytochrome P450 46A1 (CYP46A1), also named as CYP46, P450 46A1, CH24H and Cholesterol 24-hydroxylase, belongs to the cytochrome P450 family. CYP46A1 is a central nervous system-specific enzyme, and can freely cross the blood-brain barrier and be degraded in the liver. It is involved in the turnover of cholesterol. It converts cholesterol into 24S-hydroxycholesterol and, to a lesser extent, 25-hydroxycholesterol. CYP46A1 is significantly upregulated in hepatic lymphomyeloid cells compared with ESCs.(PMID:20039312)

## Notable Publications

Author	Pubmed ID	Journal	Application
Makoto Ishikawa	27653972	Sci Rep	IF
Daniel N Mitroi	31535451	EMBO Rep	WB
Shinkichi Kosaka	35367370	J Steroid Biochem Mol Biol	IHC

## Storage

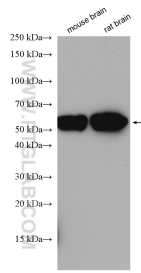
**Storage:**  
Store at -20°C. Stable for one year after shipment.  
**Storage Buffer:**  
PBS with 0.02% sodium azide and 50% glycerol pH 7.3.  
Aliquoting is unnecessary for -20°C storage

\*\*\* 20ul sizes contain 0.1% BSA

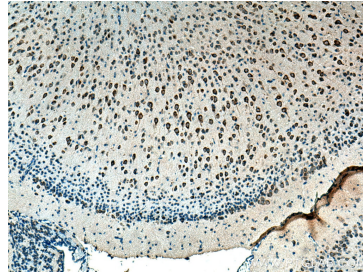
For technical support and original validation data for this product please contact:  
T: 1 (888) 4PTGLAB (1-888-478-4522) (toll free in USA), or 1(312) 455-8498 (outside USA)  
E: proteintech@ptglab.com  
W: ptglab.com

This product is exclusively available under Proteintech Group brand and is not available to purchase from any other manufacturer.

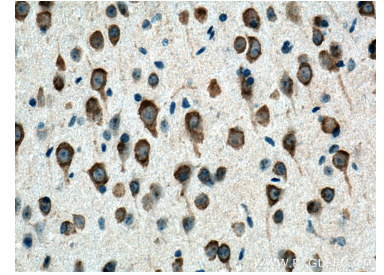
## Selected Validation Data



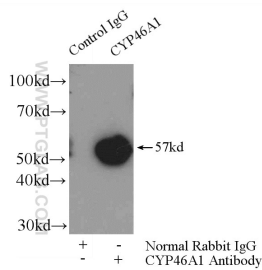
Various lysates were subjected to SDS PAGE followed by western blot with 12486-1-AP (CYP46A1 antibody) at dilution of 1:600 incubated at room temperature for 1.5 hours.



Immunohistochemical analysis of paraffin-embedded mouse brain tissue slide using 12486-1-AP (CYP46A1 antibody) at dilution of 1:200 (under 10x lens). Heat mediated antigen retrieval with Tris-EDTA buffer (pH 9.0).



Immunohistochemical analysis of paraffin-embedded mouse brain tissue slide using 12486-1-AP (CYP46A1 antibody) at dilution of 1:200 (under 40x lens). Heat mediated antigen retrieval with Tris-EDTA buffer (pH 9.0).



IP Result of anti-CYP46A1 (IP:12486-1-AP, 4ug; Detection:12486-1-AP 1:500) with mouse brain tissue lysate 3200ug.