

For Research Use Only

Mu Crystallin Polyclonal antibody

Catalog Number: 12495-1-AP **3 Publications**



Basic Information

Catalog Number: 12495-1-AP	GenBank Accession Number: BC018061	Purification Method: Antigen affinity purification
Size: 150ul , Concentration: 500 µg/ml by Nanodrop and 400 µg/ml by Bradford method using BSA as the standard;	GeneID (NCBI): 1428	Recommended Dilutions: WB 1:1000-1:4000 IHC 1:50-1:500 IF 1:50-1:500
Source: Rabbit	Full Name: crystallin, mu	
Isotype: IgG	Calculated MW: 314 aa, 34 kDa	
Immunogen Catalog Number: AG3161	Observed MW: 34 kDa	

Applications

Tested Applications: FC, IF, IHC, WB, ELISA	Positive Controls: WB : Y79 cells, Jurkat cells, human kidney tissue, human heart tissue
Cited Applications: IF, IHC, WB	IHC : human gliomas tissue,
Species Specificity: human, mouse, rat	IF : human gliomas tissue,
Cited Species: mouse, rat	

Note-IHC: suggested antigen retrieval with TE buffer pH 9.0; (*) Alternatively, antigen retrieval may be performed with citrate buffer pH 6.0

Background Information

mu Crystallin(thiomorpholine-carboxylate dehydrogenase) is also named as THBP, CRYM, ketimine reductase and belongs to the ornithine cyclodeaminase family. This protein catalyzes the reduction of imine bonds in brain substrates that may include cystathionine ketimine (CysK) and lanthionine ketimine (LK). It is also involved in the regulation of the free intracellular concentration of triiodothyronine and access to its nuclear receptor.

Notable Publications

Author	Pubmed ID	Journal	Application
Yuko Ishido	26370556	Endocr J	WB
Reiji Hommyo	29603402	Neuropathology	WB,IHC,IF
John DeSisto	32634398	Dev Cell	IF

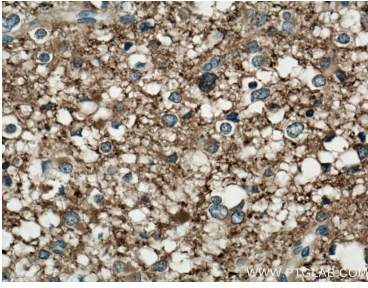
Storage

Storage:
Store at -20°C. Stable for one year after shipment.
Storage Buffer:
PBS with 0.02% sodium azide and 50% glycerol pH 7.3.
Aliquoting is unnecessary for -20°C storage

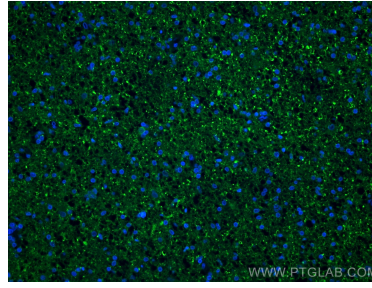
For technical support and original validation data for this product please contact:
T: 1 (888) 4PTGLAB (1-888-478-4522) (toll free in USA), or 1(312) 455-8498 (outside USA)
E: proteintech@ptglab.com
W: ptglab.com

This product is exclusively available under Proteintech Group brand and is not available to purchase from any other manufacturer.

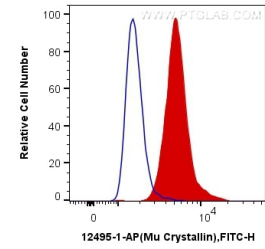
Selected Validation Data



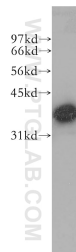
Immunohistochemical analysis of paraffin-embedded human gliomas tissue slide using 12495-1-AP (mu Crystallin antibody) at dilution of 1:200 (under 40x lens. Heat mediated antigen retrieval with Tris-EDTA buffer (pH 9.0).



Immunofluorescent analysis of (4% PFA) fixed human gliomas tissue using Mu Crystallin antibody (12495-1-AP) at dilution of 1:200 and CoraLite@488-Conjugated AffiniPure Goat Anti-Rabbit IgG(H+L).



1X10⁶ SH-SY5Y cells were intracellularly stained with 0.2 ug Anti-Human Mu Crystallin (12495-1-AP) and CoraLite@488-Conjugated AffiniPure Goat Anti-Rabbit IgG(H+L) at dilution 1:1000 (red), or 0.2 ug Control Antibody. Cells were fixed with 4% PFA and permeabilized with Flow Cytometry Perm Buffer (PF00011-C).



Y79 cells were subjected to SDS PAGE followed by western blot with 12495-1-AP (mu Crystallin antibody) at dilution of 1:400 incubated at room temperature for 1.5 hours.