

For Research Use Only

SHC1 Polyclonal antibody

Catalog Number: 12496-1-AP

Featured Product

3 Publications



Basic Information

Catalog Number:

12496-1-AP

Size:

150ul, Concentration: 1000 ug/ml by Nanodrop and 400 ug/ml by Bradford method using BSA as the standard;

Source:

Rabbit

Isotype:

IgG

Immunogen Catalog Number:

AG3165

GenBank Accession Number:

BC014158

GeneID (NCBI):

6464

UNIPROT ID:

P29353

Full Name:

SHC (Src homology 2 domain containing) transforming protein 1

Calculated MW:

66 kDa

Observed MW:

66 kDa, 52 kDa, 46 kDa

Purification Method:

Antigen affinity purification

Recommended Dilutions:

WB 1:500-1:2000

IHC 1:50-1:500

IF/ICC 1:50-1:500

Applications

Tested Applications:

WB, IHC, IF/ICC, ELISA

Cited Applications:

WB, IHC, IF

Species Specificity:

human, mouse, rat

Cited Species:

human, mouse

Note-IHC: suggested antigen retrieval with TE buffer pH 9.0; (*) Alternatively, antigen retrieval may be performed with citrate buffer pH 6.0

Positive Controls:

WB: Jurkat cells, HeLa cells, A431 cells, C6 cells, NIH/3T3 cells

IHC: human stomach tissue,

IF/ICC: HeLa cells, HepG2 cells

Background Information

The proto-oncogene SHC family consists of SHCA, SHCB, SHCC, and SHCD4 gene members, which can encode 7 kinds of cohesive molecules. SHC family is widely expressed and functional. The SHC1 gene is located in zone 1, region 2 of human chromosome 1. SHC1 is believed to be involved in inhibiting neuronal apoptosis and regulating the receptor tyrosine kinase pathway. SHC1 sensitizes cancer cells to the 8-Cl-cAMP treatment.

Notable Publications

Author	Pubmed ID	Journal	Application
Hao-Ke Li	32841643	Exp Cell Res	WB
Waleeporn Kaewlert	39418964	Biomed Pharmacother	IHC
Qiwei Jiang	37294756	Sci Adv	WB,IF

Storage

Storage:

Store at -20°C. Stable for one year after shipment.

Storage Buffer:

PBS with 0.02% sodium azide and 50% glycerol pH 7.3.

Aliquoting is unnecessary for -20°C storage

*** 20ul sizes contain 0.1% BSA

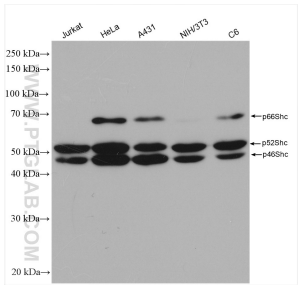
For technical support and original validation data for this product please contact:

T: 1 (888) 4PTGLAB (1-888-478-4522) (toll free in USA), or 1(312) 455-8498 (outside USA)

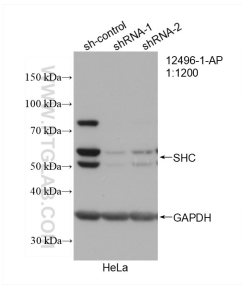
E: proteintech@ptglab.com
W: ptglab.com

This product is exclusively available under Proteintech Group brand and is not available to purchase from any other manufacturer.

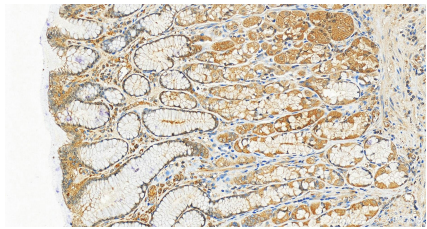
Selected Validation Data



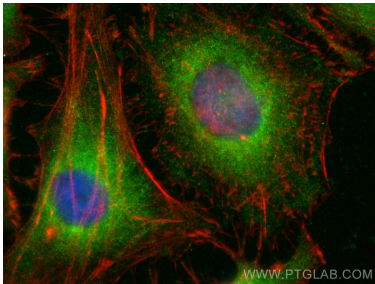
Various lysates were subjected to SDS PAGE followed by western blot with 12496-1-AP (SHC antibody) at dilution of 1:1000 incubated at room temperature for 1.5 hours.



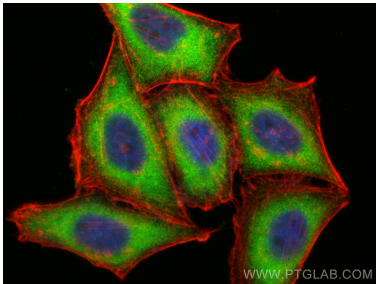
WB result of SHC antibody (12496-1-AP; 1:1200; incubated at room temperature for 1.5 hours) with sh-Control and sh-SHC transfected HeLa cells.



Immunohistochemical analysis of paraffin-embedded human normal stomach slide using 12496-1-AP (SHC antibody) at dilution of 1:1200 (under 20x lens). Heat mediated antigen retrieval with Tris-EDTA buffer (pH 9.0).



Immunofluorescent analysis of (-20°C Ethanol) fixed HeLa cells using SHC antibody (12496-1-AP) at dilution of 1:200 and CoraLite®488-Conjugated AffiniPure Goat Anti-Rabbit IgG(H+L) (SA00013-2), CL594-phalloidin (red).



Immunofluorescent analysis of (-20°C Ethanol) fixed HepG2 cells using SHC antibody (12496-1-AP) at dilution of 1:200 and CoraLite®488-Conjugated AffiniPure Goat Anti-Rabbit IgG(H+L) (SA00013-2), CL594-phalloidin (red).