

For Research Use Only

# ELF2 Polyclonal antibody

Catalog Number: 12499-1-AP

Featured Product

4 Publications



## Basic Information

### Catalog Number:

12499-1-AP

### Size:

150ul, Concentration: 500 ug/ml by Nanodrop and 200 ug/ml by Bradford method using BSA as the standard;

### Source:

Rabbit

### Isotype:

IgG

### Immunogen Catalog Number:

AG3170

### GenBank Accession Number:

BC034951

### GeneID (NCBI):

1998

### UNIPROT ID:

Q15723

### Full Name:

E74-like factor 2 (ets domain transcription factor)

### Calculated MW:

533 aa, 57 kDa

### Observed MW:

63-64 kDa, 56-57 kDa

### Purification Method:

Antigen affinity purification

### Recommended Dilutions:

WB 1:500-1:2000

IP 0.5-4.0 ug for 1.0-3.0 mg of total protein lysate

## Applications

### Tested Applications:

WB, IP, ELISA

### Cited Applications:

WB

### Species Specificity:

human, mouse, rat

### Cited Species:

human, mouse, goat

### Positive Controls:

WB : A2780 cells, human brain tissue, human liver tissue

IP : A2780 cells,

## Background Information

Ets-1 is the prototype member of a family of genes firstly identified on the basis of homology to the v-Ets oncogene isolated from the E26 erythroblastosis virus. Members of the Ets gene family have varied patterns of tissue expression, and share a highly conserved carboxy terminal domain containing a sequence related to the SV40 large T antigen nuclear localization signal sequence. This conserved domain is essential for Ets-1 binding to DNA and is likely to be responsible for the DNA binding activity of all members of the Ets gene family. ELF2 belongs to the Ets-1 family. ELF2 exists several isoforms and the range of molecular weight of isoform is about 54-66 kDa.

## Notable Publications

Author	Pubmed ID	Journal	Application
Yunpeng Bai	34719090	Cell Biol Int	WB
Shizhu Yuan	34157937	Ren Fail	WB
Yue Zhang	32656203	Front Cell Dev Biol	WB

## Storage

### Storage:

Store at -20°C. Stable for one year after shipment.

### Storage Buffer:

PBS with 0.02% sodium azide and 50% glycerol pH 7.3.

Aliquoting is unnecessary for -20°C storage

\*\*\* 20ul sizes contain 0.1% BSA

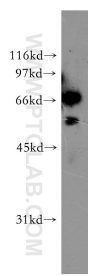
For technical support and original validation data for this product please contact:

T: 1 (888) 4PTGLAB (1-888-478-4522) (toll free in USA), or 1(312) 455-8498 (outside USA)

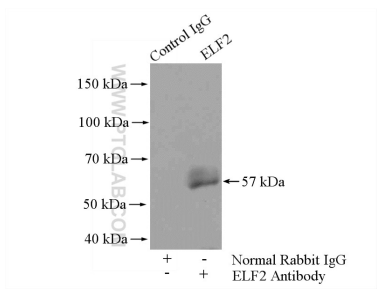
E: [proteintech@ptglab.com](mailto:proteintech@ptglab.com)  
W: [ptglab.com](http://ptglab.com)

This product is exclusively available under Proteintech Group brand and is not available to purchase from any other manufacturer.

Selected Validation Data



A2780 cells were subjected to SDS PAGE followed by western blot with 12499-1-AP (ELF2 antibody) at dilution of 1:500 incubated at room temperature for 1.5 hours.



IP result of anti-ELF2 (IP:12499-1-AP, 4ug; Detection:12499-1-AP 1:500) with A2780 cells lysate 960ug.