

For Research Use Only

# MAGEA4 Polyclonal antibody

Catalog Number: 12508-1-AP

1 Publications



## Basic Information

<b>Catalog Number:</b> 12508-1-AP	<b>GenBank Accession Number:</b> BC017723	<b>Purification Method:</b> Antigen affinity purification
<b>Size:</b> 150ul , Concentration: 600 ug/ml by Nanodrop and 267 ug/ml by Bradford method using BSA as the standard;	<b>GeneID (NCBI):</b> 4103	<b>Recommended Dilutions:</b> WB 1:2000-1:16000 IHC 1:20-1:200
<b>Source:</b> Rabbit	<b>UNIPROT ID:</b> P43358	
<b>Isotype:</b> IgG	<b>Full Name:</b> melanoma antigen family A, 4	
<b>Immunogen Catalog Number:</b> AG3193	<b>Calculated MW:</b> 317 aa, 35 kDa	
	<b>Observed MW:</b> 45 kDa	

## Applications

<b>Tested Applications:</b> WB, IHC, FC (Intra), ELISA	<b>Positive Controls:</b> WB : A431 cells, U2OS cells IHC : human breast cancer tissue,
<b>Cited Applications:</b> IHC	
<b>Species Specificity:</b> human	
<b>Cited Species:</b> human	
<b>Note-IHC: suggested antigen retrieval with TE buffer pH 9.0; (*) Alternatively, antigen retrieval may be performed with citrate buffer pH 6.0</b>	

## Background Information

MAGEA4, also named MAGE4 and CT1.4, is one of the germ cell-specific markers (PMID:16540528). SMAGEA4 is one of the subgroup I MAGEAs members which may play important roles in the immune surveillance of certain tumor types and play important roles during embryogenesis.(PMID:15222021) The antibody is specific to MAGEA4.

## Notable Publications

Author	Pubmed ID	Journal	Application
Yunpeng Wang	38425490	Front Endocrinol (Lausanne)	IHC

## Storage

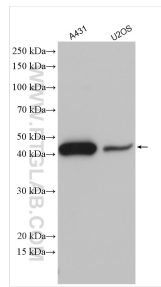
**Storage:**  
Store at -20°C. Stable for one year after shipment.  
**Storage Buffer:**  
PBS with 0.02% sodium azide and 50% glycerol pH 7.3.  
**Aliquoting is unnecessary for -20°C storage**

\*\*\* 20ul sizes contain 0.1% BSA

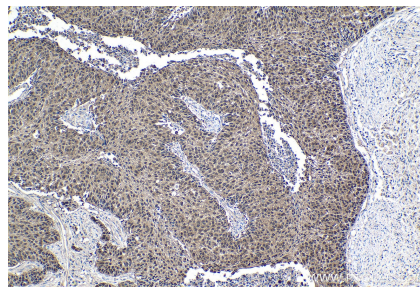
For technical support and original validation data for this product please contact:  
T: 1 (888) 4PTGLAB (1-888-478-4522) (toll free in USA), or 1(312) 455-8498 (outside USA)  
E: [proteintech@ptglab.com](mailto:proteintech@ptglab.com)  
W: [ptglab.com](http://ptglab.com)

This product is exclusively available under Proteintech Group brand and is not available to purchase from any other manufacturer.

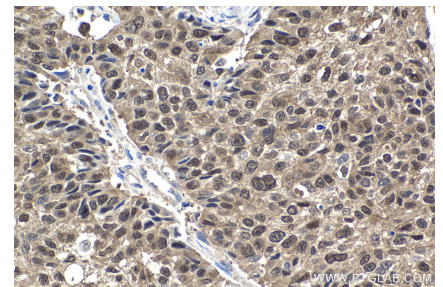
## Selected Validation Data



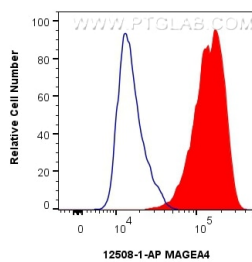
Various lysates were subjected to SDS PAGE followed by western blot with 12508-1-AP (MAGEA4 antibody) at dilution of 1:8000 incubated at room temperature for 1.5 hours.



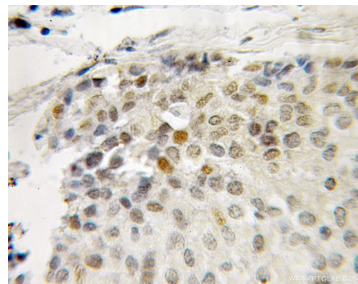
Immunohistochemical analysis of paraffin-embedded human lung cancer tissue slide using 12508-1-AP (MAGEA4 antibody) at dilution of 1:2000 (under 10x lens). Heat mediated antigen retrieval with Tris-EDTA buffer (pH 9.0).



Immunohistochemical analysis of paraffin-embedded human lung cancer tissue slide using 12508-1-AP (MAGEA4 antibody) at dilution of 1:2000 (under 40x lens). Heat mediated antigen retrieval with Tris-EDTA buffer (pH 9.0).



$1 \times 10^6$  A431 cells were intracellularly stained with 0.4 ug MAGEA4 Polyclonal antibody (12508-1-AP) and CoraLite®488-Conjugated Goat Anti-Rabbit IgG(H+L) (SA00013-2)(red), or 0.4 ug Rabbit IgG control Rabbit PolyAb (30000-O-AP) (blue). Cells were fixed and permeabilized with Transcription Factor Staining Buffer Kit (PF00011).



Immunohistochemical analysis of paraffin-embedded human breast cancer using 12508-1-AP (MAGEA4 antibody) at dilution of 1:50 (under 10x lens).