

For Research Use Only

# GLIPR1 Polyclonal antibody

Catalog Number: 12517-1-AP



## Basic Information

### Catalog Number:

12517-1-AP

### Size:

150ul , Concentration: 600 ug/ml by Nanodrop;

### Source:

Rabbit

### Isotype:

IgG

### Immunogen Catalog Number:

AG3205

### GenBank Accession Number:

BC012510

### GeneID (NCBI):

11010

### UNIPROT ID:

P48060

### Full Name:

GLI pathogenesis-related 1

### Calculated MW:

266 aa, 30 kDa

### Observed MW:

30 kDa

### Purification Method:

Antigen affinity purification

### Recommended Dilutions:

WB 1:500-1:3000

## Applications

### Tested Applications:

WB, ELISA

### Species Specificity:

human, rat, pig

### Positive Controls:

WB : A549 cells, rat kidney tissue, pig kidney tissue

## Background Information

GLIPR1, also known as related to testis-specific, vespid, and pathogenesis protein 1 (RTVP-1), is a membrane protein that belongs to the CAP family of cysteine-rich secretory proteins. GLIPR1 is closely associated with the development of tumors, especially GM (8,9). The high expression of GLIPR1 was found in GM cells but not in tumors or other cells of the central nervous system.

## Storage

### Storage:

Store at -20°C. Stable for one year after shipment.

### Storage Buffer:

PBS with 0.02% sodium azide and 50% glycerol pH 7.3.

Aliquoting is unnecessary for -20°C storage

\*\*\* 20ul sizes contain 0.1% BSA

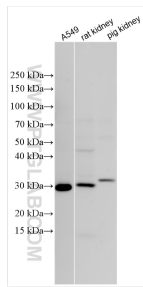
For technical support and original validation data for this product please contact:

T: 1 (888) 4PTGLAB (1-888-478-4522) (toll free in USA), or 1(312) 455-8498 (outside USA)

E: [proteintech@ptglab.com](mailto:proteintech@ptglab.com)  
W: [ptglab.com](http://ptglab.com)

This product is exclusively available under Proteintech Group brand and is not available to purchase from any other manufacturer.

## Selected Validation Data



Various lysates were subjected to SDS PAGE followed by western blot with 12517-1-AP (GLIPR1 antibody) at dilution of 1:1500 incubated at room temperature for 1.5 hours.