

For Research Use Only

# RRAS2 Polyclonal antibody

Catalog Number: 12530-1-AP

4 Publications



## Basic Information

### Catalog Number:

12530-1-AP

### Size:

150ul, Concentration: 300 ug/ml by Nanodrop;

### Source:

Rabbit

### Isotype:

IgG

### Immunogen Catalog Number:

AG3226

### GenBank Accession Number:

BC013106

### GeneID (NCBI):

22800

### UNIPROT ID:

P62070

### Full Name:

related RAS viral (r-ras) oncogene homolog 2

### Calculated MW:

204 aa, 23 kDa

### Observed MW:

23 kDa

### Purification Method:

Antigen affinity purification

### Recommended Dilutions:

WB 1:1000-1:6000

IP 0.5-4.0 ug for 1.0-3.0 mg of total protein lysate

IHC 1:50-1:500

IF/ICC 1:200-1:800

## Applications

### Tested Applications:

WB, IHC, IF/ICC, FC (Intra), IP, ELISA

### Cited Applications:

WB

### Species Specificity:

human, mouse

### Cited Species:

human, monkey

**Note-IHC: suggested antigen retrieval with TE buffer pH 9.0; (\*) Alternatively, antigen retrieval may be performed with citrate buffer pH 6.0**

### Positive Controls:

WB : NIH/3T3 cells, mouse pancreas tissue

IP : NIH/3T3 cells,

IHC : mouse heart tissue, human heart tissue, human lung cancer tissue

IF/ICC : A431 cells,

## Notable Publications

Author	Pubmed ID	Journal	Application
Guoying Dong	25217873	Fertil Steril	WB
Ping Liu	34215846	Cell Death Differ	WB
Sara Manore	39768178	Cells	WB

## Storage

### Storage:

Store at -20°C. Stable for one year after shipment.

### Storage Buffer:

PBS with 0.02% sodium azide and 50% glycerol pH 7.3.

Aliquoting is unnecessary for -20°C storage

\*\*\* 20ul sizes contain 0.1% BSA

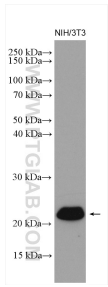
For technical support and original validation data for this product please contact:

T: 1 (888) 4PTGLAB (1-888-478-4522) (toll free in USA), or 1(312) 455-8498 (outside USA)

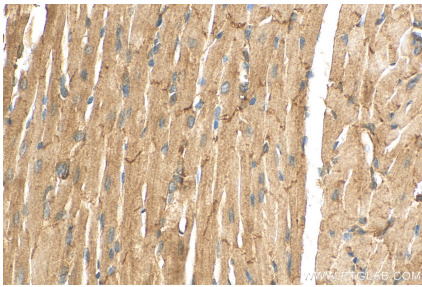
E: [proteintech@ptglab.com](mailto:proteintech@ptglab.com)  
W: [ptglab.com](http://ptglab.com)

This product is exclusively available under Proteintech Group brand and is not available to purchase from any other manufacturer.

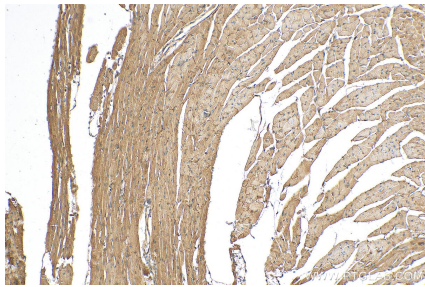
Selected Validation Data



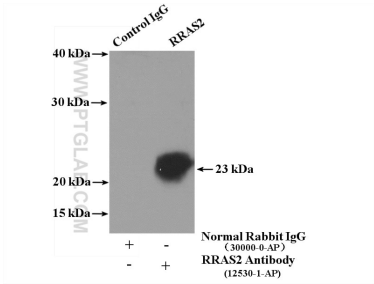
NIH/3T3 cells were subjected to SDS PAGE followed by western blot with 12530-1-AP (RRAS2 antibody) at dilution of 1:3000 incubated at room temperature for 1.5 hours.



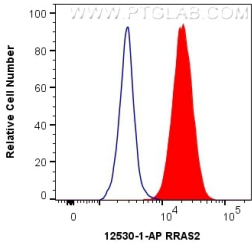
Immunohistochemical analysis of paraffin-embedded mouse heart tissue slide using 12530-1-AP (RRAS2 antibody) at dilution of 1:200 (under 40x lens). Heat mediated antigen retrieval with Tris-EDTA buffer (pH 9.0).



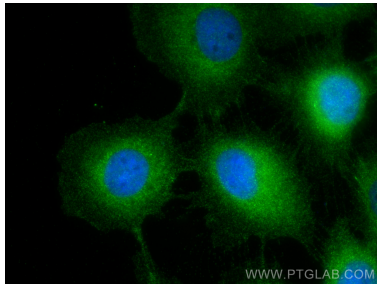
Immunohistochemical analysis of paraffin-embedded mouse heart tissue slide using 12530-1-AP (RRAS2 antibody) at dilution of 1:200 (under 10x lens). Heat mediated antigen retrieval with Tris-EDTA buffer (pH 9.0).



IP result of anti-RRAS2 (IP:12530-1-AP, 4ug; Detection:12530-1-AP 1:800) with NIH/3T3 cells lysate 4000ug.



1X10<sup>6</sup> A431 cells were intracellularly stained with 0.4 ug Anti-Human RRAS2 (12530-1-AP) and CoraLite®488-Conjugated Goat Anti-Rabbit IgG(H+L) at dilution 1:1000 (red), or 0.4 ug Control Antibody. Cells were fixed with 4% PFA and permeabilized with Flow Cytometry Perm Buffer (PF00011-C).



Immunofluorescent analysis of (-20°C Methanol) fixed A431 cells using RRAS2 antibody (12530-1-AP) at dilution of 1:400 and CoraLite®488-Conjugated Goat Anti-Rabbit IgG(H+L).