

For Research Use Only

# Amylase Alpha Polyclonal antibody

Catalog Number: 12540-1-AP

10 Publications



## Basic Information

<b>Catalog Number:</b> 12540-1-AP	<b>GenBank Accession Number:</b> BC011179	<b>Purification Method:</b> Antigen affinity purification
<b>Size:</b> 150ul , Concentration: 750 µg/ml by Nanodrop and 400 µg/ml by Bradford method using BSA as the standard;	<b>GeneID (NCBI):</b> 280	<b>Recommended Dilutions:</b> WB 1:5000-1:20000 IHC 1:50-1:500
<b>Source:</b> Rabbit	<b>UNIPROT ID:</b> P19961	
<b>Isotype:</b> IgG	<b>Full Name:</b> amylase, alpha 2B (pancreatic)	
<b>Immunogen Catalog Number:</b> AG3260	<b>Calculated MW:</b> 511 aa, 58 kDa	
	<b>Observed MW:</b> 58 kDa	

## Applications

<b>Tested Applications:</b> WB, IHC, ELISA	<b>Positive Controls:</b> WB : mouse pancreas tissue, IHC : human pancreas cancer tissue,
<b>Cited Applications:</b> WB, IF, IHC	
<b>Species Specificity:</b> human, mouse, rat	
<b>Cited Species:</b> human, rat, mouse	
<b>Note-IHC: suggested antigen retrieval with TE buffer pH 9.0; (*) Alternatively, antigen retrieval may be performed with citrate buffer pH 6.0</b>	

## Background Information

AMY2B(alpha-amylase 2B) belongs to the glycosyl hydrolase 13 family. This protein is involved in the endohydrolysis of 1,4-alpha-glucosidic linkages in oligosaccharides and polysaccharides. The full length 58 kDa protein has a signal peptide with 15 amino acids. Human amylases (Amy1, Amy2A, and Amy2B) commonly have two potential N-glycosylation sites (N427 and N476) in their C-terminal region (S Takashima, J Amano, 2012). 12540-1-AP can recognize both AMY2A and AMY2B.

## Notable Publications

Author	Pubmed ID	Journal	Application
Takafumi Fuchino	35672698	BMC Gastroenterol	IHC
Xufeng Tao	32070876	Biomed Pharmacother	IF
Mengmeng Liu	34890544	Eur J Pharmacol	IF

## Storage

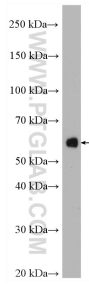
**Storage:**  
Store at -20°C. Stable for one year after shipment.  
**Storage Buffer:**  
PBS with 0.02% sodium azide and 50% glycerol pH 7.3.  
Aliquoting is unnecessary for -20°C storage

\*\*\* 20ul sizes contain 0.1% BSA

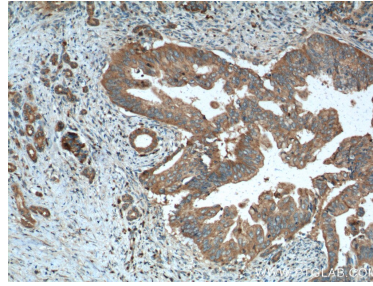
For technical support and original validation data for this product please contact:  
T: 1 (888) 4PTGLAB (1-888-478-4522) (toll free in USA), or 1(312) 455-8498 (outside USA)  
E: proteintech@ptglab.com  
W: ptglab.com

This product is exclusively available under Proteintech Group brand and is not available to purchase from any other manufacturer.

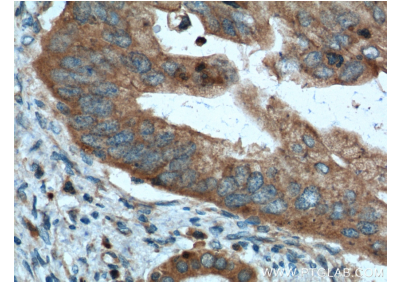
## Selected Validation Data



mouse pancreas tissue were subjected to SDS PAGE followed by western blot with 12540-1-AP (Amylase, alpha antibody) at dilution of 1:20000 incubated at room temperature for 1.5 hours.



Immunohistochemical analysis of paraffin-embedded human pancreas cancer tissue slide using 12540-1-AP (Amylase, alpha antibody at dilution of 1:200 (under 10x lens). Heat mediated antigen retrieval with Tris-EDTA buffer (pH 9.0).



Immunohistochemical analysis of paraffin-embedded human pancreas cancer tissue slide using 12540-1-AP (Amylase, alpha antibody at dilution of 1:200 (under 40x lens). Heat mediated antigen retrieval with Tris-EDTA buffer (pH 9.0).