

For Research Use Only

RGS1 Polyclonal antibody

Catalog Number: 12547-1-AP

Featured Product



Basic Information

Catalog Number:

12547-1-AP

Size:

150ul , Concentration: 600 ug/ml by Nanodrop;

Source:

Rabbit

Isotype:

IgG

Immunogen Catalog Number:

AG3315

GenBank Accession Number:

BC015510

GeneID (NCBI):

5996

UNIPROT ID:

Q08116

Full Name:

regulator of G-protein signaling 1

Calculated MW:

196 aa, 22 kDa

Observed MW:

30 kDa

Purification Method:

Antigen affinity purification

Recommended Dilutions:

WB 1:500-1:1000

IHC 1:50-1:500

Applications

Tested Applications:

WB, IHC, ELISA

Species Specificity:

human, mouse, rat

Note-IHC: suggested antigen retrieval with TE buffer pH 9.0; (*) Alternatively, antigen retrieval may be performed with citrate buffer pH 6.0

Positive Controls:

WB : HL-60 cells, mouse small intestine tissue, HepG2 cells, NK-92 cells, rat small intestine tissue

IHC : human stomach cancer tissue,

Background Information

RGS1 (Regulator of G-protein signaling 1) is also named as 1R20, BL34 and IER1. RGS1 encodes a member of the regulator of G-protein signaling family, which can act as a GTPase-activating protein (GAP), increasing the rate of conversion of the GTP to GDP, driving G-protein into its inactive GDP-bound form, hence attenuating or turning off G-protein-coupled receptor signaling (PMID: 8774882). RGS1 is highly expressed in immune cells including T cells, B cells, natural killer (NK) cells, dendritic cells and monocytes, suggesting a role for RGS1 in immune cell regulation (PMID: 34956194). RGS1 was highly expressed in tumor tissues and correlated with shorter overall survival, which also appeared in several previous studies, including multiple myeloma, melanoma, nonsmall cell lung cancer, gastric cancer, diffuse large B-cell lymphoma (PMID: 34956194). RGS1 protein, located at the cytoplasm and membrane, is enriched in tumor tissues compared with normal tissues. RGS1 was identified as a HIF-dependent hypoxia target that dampens cell migration and signal transduction (PMID: 24686421).

Storage

Storage:

Store at -20°C. Stable for one year after shipment.

Storage Buffer:

PBS with 0.02% sodium azide and 50% glycerol pH 7.3.

Aliquoting is unnecessary for -20°C storage

*** 20ul sizes contain 0.1% BSA

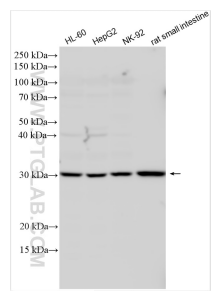
For technical support and original validation data for this product please contact:

T: 1 (888) 4PTGLAB (1-888-478-4522) (toll free in USA), or 1(312) 455-8498 (outside USA)

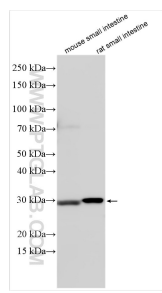
E: proteintech@ptglab.com
W: ptglab.com

This product is exclusively available under Proteintech Group brand and is not available to purchase from any other manufacturer.

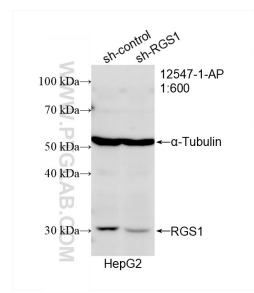
Selected Validation Data



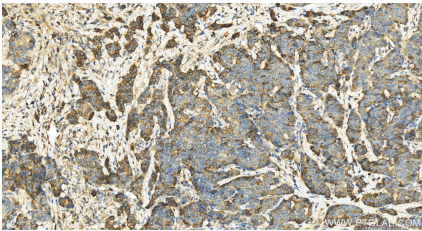
Various lysates were subjected to SDS PAGE followed by western blot with 12547-1-AP (RGS1 antibody) at dilution of 1:600 incubated at room temperature for 1.5 hours.



Various lysates were subjected to SDS PAGE followed by western blot with 12547-1-AP (RGS1 antibody) at dilution of 1:600 incubated at room temperature for 1.5 hours.



WB result of RGS1 antibody (12547-1-AP; 1:600; incubated at room temperature for 1.5 hours) with sh-Control and sh-RGS1 transfected HepG2 cells.



Immunohistochemical analysis of paraffin-embedded human stomach cancer tissue slide using 12547-1-AP (RGS1 antibody) at dilution of 1:200 (under 20x lens). Heat mediated antigen retrieval with Sodium Citrate buffer (pH 6.0).