

For Research Use Only

Neuroserpin Polyclonal antibody

Catalog Number:12558-1-AP



Basic Information

Catalog Number:

12558-1-AP

Size:

150ul , Concentration: 260 ug/ml by Nanodrop and 220 ug/ml by Bradford method using BSA as the standard;

Source:

Rabbit

Isotype:

IgG

Immunogen Catalog Number:

AG3275

GenBank Accession Number:

BC018043

GeneID (NCBI):

5274

UNIPROT ID:

Q99574

Full Name:

serpin peptidase inhibitor, clade I (neuroserpin), member 1

Calculated MW:

410 aa, 47 kDa

Observed MW:

46 kDa

Purification Method:

Antigen affinity purification

Recommended Dilutions:

WB 1:500-1:1000

IP 0.5-4.0 ug for 1.0-3.0 mg of total protein lysate

IF-P 1:50-1:500

Applications

Tested Applications:

WB, IF-P, IP, ELISA

Species Specificity:

human, mouse, rat

Positive Controls:

WB : mouse brain tissue,

IP : rat brain tissue,

IF-P : mouse brain tissue,

Background Information

Neuroserpin is a member of the serpin family of serine protease inhibitors predominantly expressed in the nervous system, such as the cerebral cortex, hippocampus and the spinal cord. Neuroserpin exerts protective effects in neurons against excitotoxicity both in vitro and in vivo. Its proteolytic inhibitory activity is shown to protect neurons against damage caused by plasmin activation. Mice overexpressing neuroserpin exhibited loss of tPA activity in the brain. Overexpression of neuroserpin in primary neurons leads to increased dendritic arborization and altered dendritic spine shape.

Storage

Storage:

Store at -20°C. Stable for one year after shipment.

Storage Buffer:

PBS with 0.02% sodium azide and 50% glycerol pH 7.3.

Aliquoting is unnecessary for -20°C storage

*** 20ul sizes contain 0.1% BSA

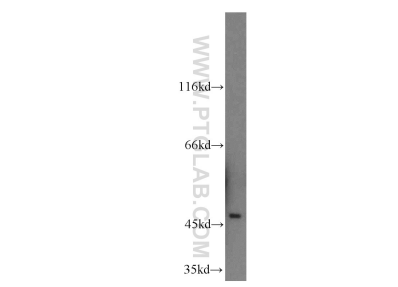
For technical support and original validation data for this product please contact:

T: 1 (888) 4PTGLAB (1-888-478-4522) (toll free in USA), or 1(312) 455-8498 (outside USA)

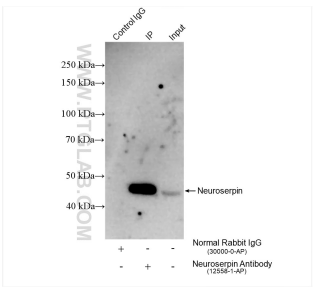
E: proteintech@ptglab.com
W: ptglab.com

This product is exclusively available under Proteintech Group brand and is not available to purchase from any other manufacturer.

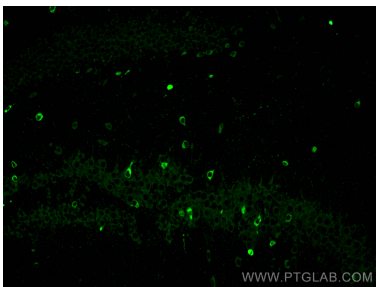
Selected Validation Data



mouse brain tissue were subjected to SDS PAGE followed by western blot with 12558-1-AP (Neuroserpin antibody) at dilution of 1:500 incubated at room temperature for 1.5 hours.



IP result of anti-Neuroserpin (IP:12558-1-AP, 4ug; Detection:12558-1-AP 1:300) with rat brain tissue lysate 1880 ug.



Immunofluorescent analysis of (4% PFA) fixed paraffin-embedded mouse brain tissue using Neuroserpin antibody (12558-1-AP) at dilution of 1:200 and CoraLite®488-Conjugated AffiniPure Goat Anti-Rabbit IgG(H+L) (SA00013-2). Heat mediated antigen retrieval with Tris-EDTA buffer (pH 9.0).