

For Research Use Only

# AK3 Polyclonal antibody, PBS Only

Catalog Number:12562-1-PBS



## Basic Information

**Catalog Number:**

12562-1-PBS

**Size:**

100ug , Concentration: 1 mg/ml by Nanodrop;

**Source:**

Rabbit

**Isotype:**

IgG

**Immunogen Catalog Number:**

AG3146

**GenBank Accession Number:**

BC013771

**GeneID (NCBI):**

50808

**UNIPROT ID:**

Q9UIJ7

**Full Name:**

adenylate kinase 3

**Calculated MW:**

227 aa, 26 kDa

**Observed MW:**

26 kDa

**Purification Method:**

Antigen affinity purification

## Applications

**Tested Applications:**

WB, IHC, IF/ICC, IP, Indirect ELISA

**Species Specificity:**

human, mouse, rat

## Background Information

AK3(Adenylate kinase 3) is also named as AK3L1, AK6, AKL3L and belongs to the adenylate kinase family. It is located in the mitochondrial matrix and is a GTP:AMP phosphotransferase(PMID:2546792). AK3 can be detected AK3 at an apparent molecular mass of 28 kD by western blot analysis and subcellular fractionation of mouse liver and kidney detected Ak3 in the mitochondrial fraction(PMID:11485571). This antibody may also recognize AK4 due to the high homology.

## Storage

**Storage:**

Store at -80°C.

**Storage Buffer:**

PBS only, pH7.3

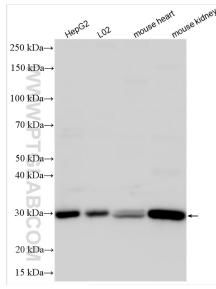
For technical support and original validation data for this product please contact:

T: 1 (888) 4PTGLAB (1-888-478-4522) (toll free in USA), or 1(312) 455-8498 (outside USA)

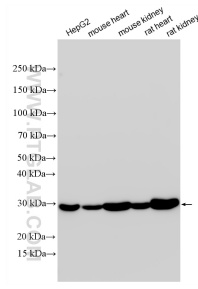
E: [proteintech@ptglab.com](mailto:proteintech@ptglab.com)  
W: [ptglab.com](http://ptglab.com)

**This product is exclusively available under Proteintech Group brand and is not available to purchase from any other manufacturer.**

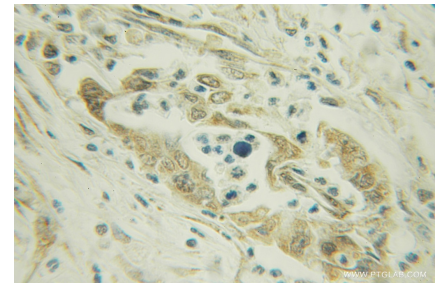
## Selected Validation Data



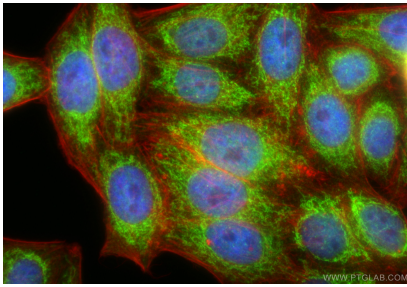
Various lysates were subjected to SDS PAGE followed by western blot with 12562-1-AP (AK3 antibody) at dilution of 1:1000 incubated at room temperature for 1.5 hours. This data was developed using the same antibody clone with 12562-1-PBS in a different storage buffer formulation.



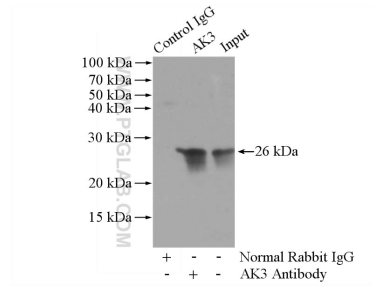
Various lysates were subjected to SDS PAGE followed by western blot with 12562-1-AP (AK3 antibody) at dilution of 1:15000 incubated at room temperature for 1.5 hours. This data was developed using the same antibody clone with 12562-1-PBS in a different storage buffer formulation.



Immunohistochemical analysis of paraffin-embedded human pancreas cancer using 12562-1-AP (AK3 antibody) at dilution of 1:50 (under 10x lens). This data was developed using the same antibody clone with 12562-1-PBS in a different storage buffer formulation.



Immunofluorescent analysis of (4% PFA) fixed HepG2 cells using AK3 antibody (12562-1-AP) at dilution of 1:400 and CoralLite@488-Conjugated Goat Anti-Rabbit IgG(H+L) (SA00013-2), CL594-phalloidin (red). This data was developed using the same antibody clone with 12562-1-PBS in a different storage buffer formulation.



IP result of anti-AK3 (IP:12562-1-AP, 3ug; Detection:12562-1-AP 1:500) with mouse kidney tissue lysate 4400ug. This data was developed using the same antibody clone with 12562-1-PBS in a different storage buffer formulation.