

For Research Use Only

SCFD1 Polyclonal antibody

Catalog Number: 12569-1-AP

Featured Product

6 Publications



Basic Information

Catalog Number:

12569-1-AP

Size:

150ul, Concentration: 500 ug/ml by Nanodrop and 373 ug/ml by Bradford method using BSA as the standard;

Source:

Rabbit

Isotype:

IgG

Immunogen Catalog Number:

AG3234

GenBank Accession Number:

BC017734

GeneID (NCBI):

23256

UNIPROT ID:

Q8WVM8

Full Name:

sec1 family domain containing 1

Calculated MW:

642 aa, 72 kDa

Observed MW:

66-72 kDa

Purification Method:

Antigen affinity purification

Recommended Dilutions:

WB 1:5000-1:50000

IP 0.5-4.0 ug for 1.0-3.0 mg of total protein lysate

IHC 1:50-1:500

IF/ICC 1:50-1:500

Applications

Tested Applications:

WB, IHC, IF/ICC, IP, ELISA

Cited Applications:

WB, IP

Species Specificity:

human, mouse, rat

Cited Species:

human, bacteria

Positive Controls:

WB : A549 cells, HEK-293T cells, human kidney tissue, human liver tissue, HEK-293 cells, HeLa cells, NIH/3T3 cells

IP : HeLa cells,

IHC : human endometrial cancer tissue,

IF/ICC : HeLa cells,

Note-IHC: suggested antigen retrieval with TE buffer pH 9.0; (*) Alternatively, antigen retrieval may be performed with citrate buffer pH 6.0

Background Information

SCFD1, also named as C14orf163, KIAA0917, STXBP1L2, Sly1p and SLY1, belongs to the STXBP/unc-18/SEC1 family. It is a component of the syntaxin-5 SNARE complex which regulates the early secretory pathway of eukaryotic cells at the level of endoplasmic reticulum (ER) to Golgi transport.(PMID:21242315) SCFD1 plays a role in SNARE-pin assembly and Golgi-to-ER retrograde transport via its interaction with COG4. It is involved in vesicular transport between the endoplasmic reticulum and the Golgi.

Notable Publications

Author	Pubmed ID	Journal	Application
Xue Shen	30408277	J Appl Microbiol	WB
Guizhen Wang	32687939	Microb Pathog	WB
Hong Huang	35465820	Autophagy	WB,IP

Storage

Storage:

Store at -20°C. Stable for one year after shipment.

Storage Buffer:

PBS with 0.02% sodium azide and 50% glycerol pH 7.3.

Aliquoting is unnecessary for -20°C storage

*** 20ul sizes contain 0.1% BSA

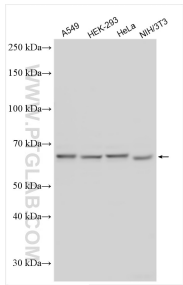
For technical support and original validation data for this product please contact:

T: 1 (888) 4PTGLAB (1-888-478-4522) (toll free in USA), or 1(312) 455-8498 (outside USA)

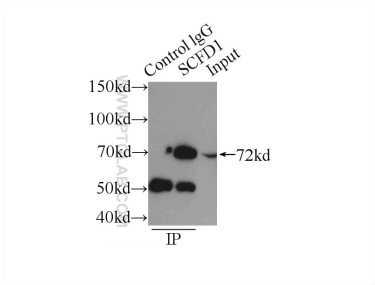
E: proteintech@ptglab.com
W: ptglab.com

This product is exclusively available under Proteintech Group brand and is not available to purchase from any other manufacturer.

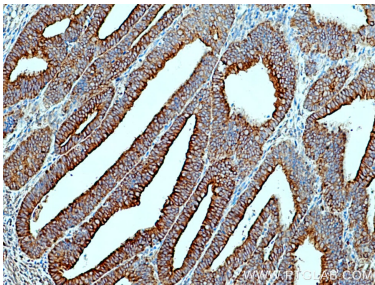
Selected Validation Data



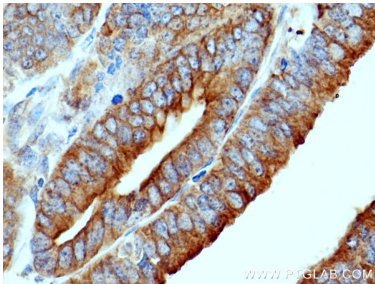
Various lysates were subjected to SDS PAGE followed by western blot with 12569-1-AP (SCFD1 antibody) at dilution of 1:10000 incubated at room temperature for 1.5 hours.



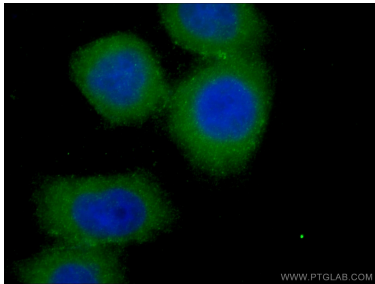
IP result of anti-SCFD1 (IP:12569-1-AP, 3ug; Detection:12569-1-AP 1:500) with HeLa cells lysate 2150ug.



Immunohistochemical analysis of paraffin-embedded human endometrial cancer tissue slide using 12569-1-AP (SCFD1 antibody) at dilution of 1:200 (under 10x lens). Heat mediated antigen retrieval with Tris-EDTA buffer (pH 9.0).



Immunohistochemical analysis of paraffin-embedded human endometrial cancer tissue slide using 12569-1-AP (SCFD1 antibody) at dilution of 1:200 (under 40x lens). Heat mediated antigen retrieval with Tris-EDTA buffer (pH 9.0).



Immunofluorescent analysis of (-20°C Ethanol) fixed HeLa cells using 12569-1-AP (SCFD1 antibody) at dilution of 1:50 and CoraLite488-Conjugated Goat Anti-Rabbit IgG(H+L).