

For Research Use Only

# PBX3 Polyclonal antibody

Catalog Number: 12571-1-AP

Featured Product

15 Publications



## Basic Information

### Catalog Number:

12571-1-AP

### Size:

150ul, Concentration: 400 ug/ml by Nanodrop and 133 ug/ml by Bradford method using BSA as the standard;

### Source:

Rabbit

### Isotype:

IgG

### Immunogen Catalog Number:

AG3239

### GenBank Accession Number:

BC016977

### GeneID (NCBI):

5090

### UNIPROT ID:

P40426

### Full Name:

pre-B-cell leukemia homeobox 3

### Calculated MW:

434 aa, 47 kDa

### Observed MW:

47 kDa

### Purification Method:

Antigen affinity purification

### Recommended Dilutions:

WB 1:500-1:1000

IP 0.5-4.0 ug for 1.0-3.0 mg of total protein lysate

IHC 1:20-1:200

IF/ICC 1:200-1:800

## Applications

### Tested Applications:

WB, IHC, IF/ICC, IP, ELISA

### Cited Applications:

WB, IHC, IF, IP, ChIP, RIP

### Species Specificity:

human, mouse, rat

### Cited Species:

human, mouse, rat

### Positive Controls:

WB: human lung tissue,

IP: HL-60 cells,

IHC: human lung cancer tissue,

IF/ICC: HeLa cells,

**Note-IHC: suggested antigen retrieval with TE buffer pH 9.0; (\*) Alternatively, antigen retrieval may be performed with citrate buffer pH 6.0**

## Background Information

PBX3, also named as Pre-B-cell leukemia transcription factor 3, is a 434 amino acid protein, which contains 1 homeobox DNA-binding domain and belongs to the TALE/PBX homeobox family. PBX3 localizes in the nucleus and as a transcriptional activator that binds the sequence 5'-ATCAATCAA-3'. PBX3 is ubiquitously expressed in many tissues.

## Notable Publications

Author	Pubmed ID	Journal	Application
Jingjing Zhang	29066842	Sci Rep	IF
Shuanhu Wang	27900025	Oncol Lett	WB
Dandan Wang	35414770	Int J Biol Sci	WB, IHC

## Storage

### Storage:

Store at -20°C. Stable for one year after shipment.

### Storage Buffer:

PBS with 0.02% sodium azide and 50% glycerol pH 7.3.

Aliquoting is unnecessary for -20°C storage

\*\*\* 20ul sizes contain 0.1%BSA

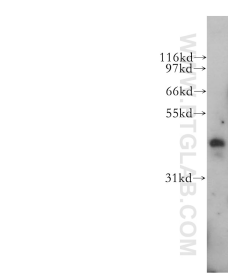
For technical support and original validation data for this product please contact:

T: 1 (888) 4PTGLAB (1-888-478-4522) (toll free in USA), or 1(312) 455-8498 (outside USA)

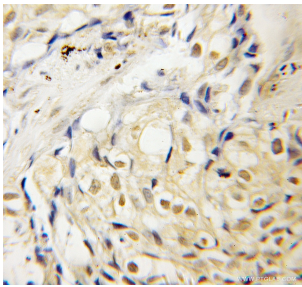
E: [proteintech@ptglab.com](mailto:proteintech@ptglab.com)  
W: [ptglab.com](http://ptglab.com)

This product is exclusively available under Proteintech Group brand and is not available to purchase from any other manufacturer.

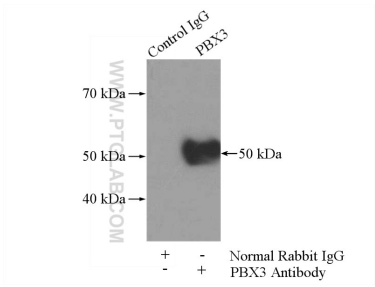
Selected Validation Data



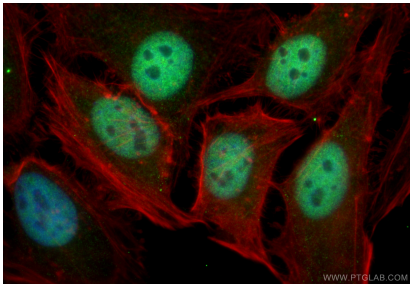
human lung tissue were subjected to SDS PAGE followed by western blot with 12571-1-AP (PBX3 antibody) at dilution of 1:500 incubated at room temperature for 1.5 hours.



Immunohistochemical analysis of paraffin-embedded human lung cancer using 12571-1-AP (PBX3 antibody) at dilution of 1:50 (under 10x lens).



IP result of anti-PBX3 (IP:12571-1-AP, 4ug; Detection:12571-1-AP 1:500) with HL-60 cells lysate 3040ug.



Immunofluorescent analysis of (4% PFA) fixed HeLa cells using PBX3 antibody (12571-1-AP) at dilution of 1:400 and Multi-rAb CoraLite ® Plus 488-Goat Anti-Rabbit Recombinant Secondary Antibody (H+L) (RGAR002), CL594-phalloidin (red).