

For Research Use Only

PTTG1IP Polyclonal antibody

Catalog Number: 12575-1-AP **3 Publications**



Basic Information

Catalog Number: 12575-1-AP	GenBank Accession Number: BC012858	Purification Method: Antigen affinity purification
Size: 150ul , Concentration: 300 µg/ml by Nanodrop and 147 µg/ml by Bradford method using BSA as the standard;	GeneID (NCBI): 754	Recommended Dilutions: WB 1:500-1:1000 IP 0.5-4.0 ug for IP and 1:200-1:1000 for WB
Source: Rabbit	Full Name: pituitary tumor-transforming 1 interacting protein	IHC 1:20-1:200 IF 1:50-1:500
Isotype: IgG	Calculated MW: 180 aa, 20 kDa	
Immunogen Catalog Number: AG3250	Observed MW: 26 kDa	

Applications

Tested Applications: IF, IHC, IP, WB, ELISA	Positive Controls: WB : A375 cells, HEK-293 cells, HeLa cells IP : HEK-293 cells, IHC : human testis tissue, human colon tissue, human liver tissue IF : HeLa cells, PC-3 cells
Cited Applications: IHC, WB	
Species Specificity: human	
Cited Species: human	

Note-IHC: suggested antigen retrieval with TE buffer pH 9.0; (*) Alternatively, antigen retrieval may be performed with citrate buffer pH 6.0

Background Information

Notable Publications

Author	Pubmed ID	Journal	Application
Wang Zhen	28472828	Horm Metab Res	WB
Tian Zhang	29435035	Oncol Lett	IHC
Wenfang Bao	37689128	Pharmacol Res	WB

Storage

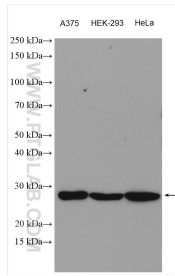
Storage:
Store at -20°C. Stable for one year after shipment.
Storage Buffer:
PBS with 0.02% sodium azide and 50% glycerol pH 7.3.
Aliquoting is unnecessary for -20°C storage

*** 20ul sizes contain 0.1% BSA

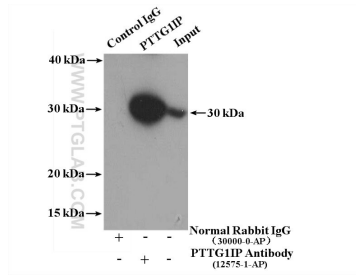
For technical support and original validation data for this product please contact:
T: 1 (888) 4PTGLAB (1-888-478-4522) (toll free in USA), or 1(312) 455-8498 (outside USA)
E: proteintech@ptglab.com
W: ptglab.com

This product is exclusively available under Proteintech Group brand and is not available to purchase from any other manufacturer.

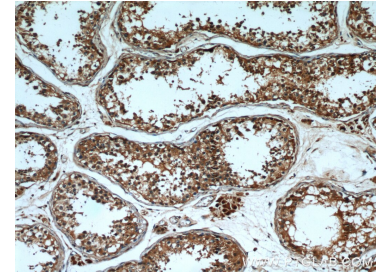
Selected Validation Data



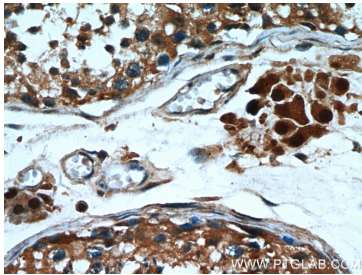
Various lysates were subjected to SDS PAGE followed by western blot with 12575-1-AP (PTTG1P antibody) at dilution of 1:500 incubated at room temperature for 1.5 hours.



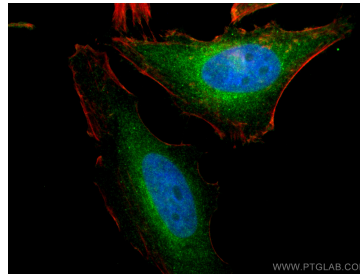
IP result of anti-PTTG1P (IP:12575-1-AP, 4ug; Detection:12575-1-AP 1:300) with HEK-293 cells lysate 2600 ug.



Immunohistochemical analysis of paraffin-embedded human testis using 12575-1-AP (PTTG1P antibody) at dilution of 1:50 (under 10x lens).



Immunohistochemical analysis of paraffin-embedded human testis using 12575-1-AP (PTTG1P antibody) at dilution of 1:50 (under 40x lens).



Immunofluorescent analysis of (4% PFA) fixed HeLa cells using PTTG1P antibody (12575-1-AP) at dilution of 1:200 and CoralLite@488-Conjugated AffiniPure Goat Anti-Rabbit IgG(H+L), CL594-Phalloidin (red).