

For Research Use Only

UBE2Q2 Polyclonal antibody

Catalog Number: 12581-1-AP

2 Publications



Basic Information

Catalog Number:

12581-1-AP

Size:

150ul, Concentration: 800 ug/ml by Nanodrop and 400 ug/ml by Bradford method using BSA as the standard;

Source:

Rabbit

Isotype:

IgG

Immunogen Catalog Number:

AG3276

GenBank Accession Number:

BC017708

GeneID (NCBI):

92912

UNIPROT ID:

Q8WVN8

Full Name:

ubiquitin-conjugating enzyme E2Q family member 2

Calculated MW:

375 aa, 43 kDa

Observed MW:

43 kDa

Purification Method:

Antigen affinity purification

Recommended Dilutions:

WB 1:500-1:2000

IP 0.5-4.0 ug for 1.0-3.0 mg of total protein lysate

IHC 1:20-1:200

Applications

Tested Applications:

WB, IP, IHC, ELISA

Cited Applications:

WB

Species Specificity:

human, mouse, rat

Cited Species:

human, mouse

Note-IHC: suggested antigen retrieval with TE buffer pH 9.0; (*) Alternatively, antigen retrieval may be performed with citrate buffer pH 6.0

Positive Controls:

WB : A431 cells, mouse ovary tissue, HEK-293T cells

IP : HEK-293T cells,

IHC : human skin cancer tissue,

Notable Publications

Author	Pubmed ID	Journal	Application
Lei Sun	33636127	Cell	WB
Xiao Hu	38410210	Transl Cancer Res	WB

Storage

Storage:

Store at -20°C. Stable for one year after shipment.

Storage Buffer:

PBS with 0.02% sodium azide and 50% glycerol pH 7.3.

Aliquoting is unnecessary for -20°C storage

*** 20ul sizes contain 0.1% BSA

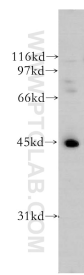
For technical support and original validation data for this product please contact:

T: 1 (888) 4PTGLAB (1-888-478-4522) (toll free in USA), or 1(312) 455-8498 (outside USA)

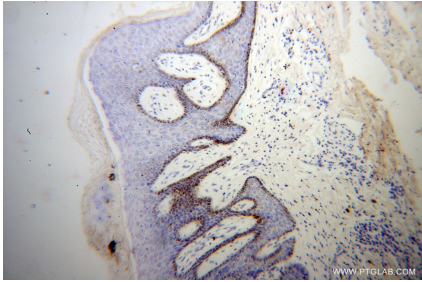
E: proteintech@ptglab.com
W: ptglab.com

This product is exclusively available under Proteintech Group brand and is not available to purchase from any other manufacturer.

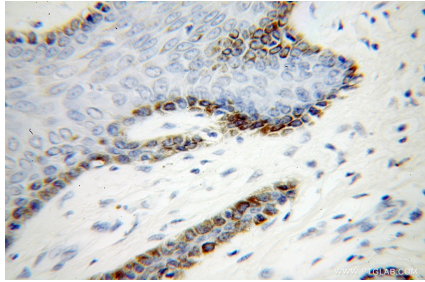
Selected Validation Data



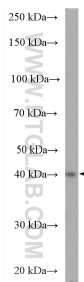
A431 cells were subjected to SDS PAGE followed by western blot with 12581-1-AP (UBE2Q2 antibody) at dilution of 1:400 incubated at room temperature for 1.5 hours.



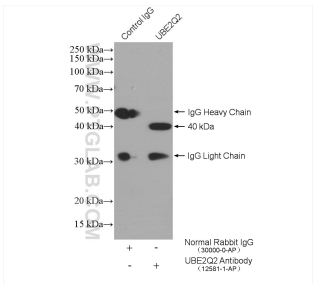
Immunohistochemical analysis of paraffin-embedded human skin cancer using 12581-1-AP (UBE2Q2 antibody) at dilution of 1:100 (under 10x lens).



Immunohistochemical analysis of paraffin-embedded human skin cancer using 12581-1-AP (UBE2Q2 antibody) at dilution of 1:100 (under 40x lens).



HEK-293T cells were subjected to SDS PAGE followed by western blot with 12581-1-AP (UBE2Q2 antibody) at dilution of 1:500 incubated at room temperature for 1.5 hours.



IP result of anti-UBE2Q2 (IP:12581-1-AP, 4ug; Detection:12581-1-AP 1:300) with HEK-293T cells lysate 1320 ug.