

For Research Use Only

Integrin Beta 1 Polyclonal antibody

Catalog Number: 12594-1-AP

Featured Product

61 Publications



Basic Information

Catalog Number: 12594-1-AP	GenBank Accession Number: BC020057	Purification Method: Antigen affinity purification
Size: 150ul , Concentration: 900 µg/ml by Nanodrop;	GeneID (NCBI): 3688	Recommended Dilutions: WB 1:1000-1:8000 IHC 1:50-1:500
Source: Rabbit	Full Name: integrin, beta 1 (fibronectin receptor, beta polypeptide, antigen CD29 includes MDF2, MSK12)	
Isotype: IgG	Calculated MW: 88 kDa	
Immunogen Catalog Number: AG3078	Observed MW: 130 kDa	

Applications

Tested Applications: IHC, WB, ELISA	Positive Controls: WB : HT-1080 cells, HeLa cells
Cited Applications: IHC, IP, WB	IHC : human placenta tissue, human breast cancer tissue, mouse kidney tissue
Species Specificity: human, mouse, rat	
Cited Species: human, chicken, sika deer, rat, mouse, bovine	
Note-IHC: suggested antigen retrieval with TE buffer pH 9.0; (*) Alternatively, antigen retrieval may be performed with citrate buffer pH 6.0	

Background Information

Integrin beta-1 (ITGB1), also named as CD29, is a 130 kDa single chain type I glycoprotein that is expressed in a heterodimeric complex with one of six distinct α subunits, comprising the very late activation antigen (VLA) subfamily of adhesion receptors. It is one of the essential surface molecules expressed on human MSC from bone marrow and other sources. The β 1 subunit is also broadly expressed on lymphocytes and monocytes, weakly expressed on granulocytes, and not expressed on erythrocytes. These receptors are involved in a variety of cell-cell and cell-matrix interactions.

Notable Publications

Author	Pubmed ID	Journal	Application
Qiaoyan Yu	36155064	Biochem Biophys Res Commun	WB
Lele Niu	36068215	Cell Discov	IHC, IF
Huijiao Lv	36120570	Front Cell Dev Biol	IF

Storage

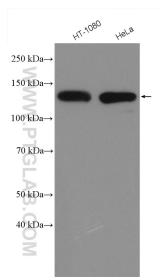
Storage:
Store at -20°C. Stable for one year after shipment.
Storage Buffer:
PBS with 0.02% sodium azide and 50% glycerol pH 7.3.
Aliquoting is unnecessary for -20°C storage

*** 20ul sizes contain 0.1% BSA

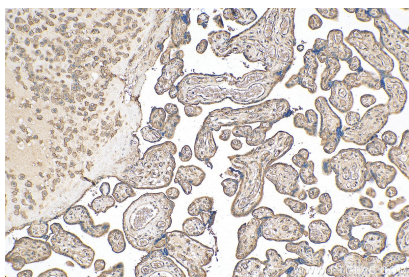
For technical support and original validation data for this product please contact:
T: 1 (888) 4PTGLAB (1-888-478-4522) (toll free in USA), or 1(312) 455-8498 (outside USA)
E: proteintech@ptglab.com
W: ptglab.com

This product is exclusively available under Proteintech Group brand and is not available to purchase from any other manufacturer.

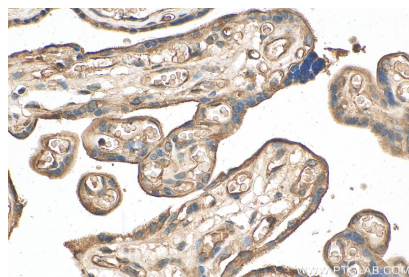
Selected Validation Data



HT-1080 cells were subjected to SDS PAGE followed by western blot with 12594-1-AP (Integrin Beta 1 antibody) at dilution of 1:4000 incubated at room temperature for 1.5 hours.



Immunohistochemical analysis of paraffin-embedded human placenta tissue slide using 12594-1-AP (Integrin Beta 1 antibody) at dilution of 1:200 (under 10x lens). Heat mediated antigen retrieval with Tris-EDTA buffer (pH 9.0).



Immunohistochemical analysis of paraffin-embedded human placenta tissue slide using 12594-1-AP (Integrin Beta 1 antibody) at dilution of 1:200 (under 40x lens). Heat mediated antigen retrieval with Tris-EDTA buffer (pH 9.0).