

For Research Use Only

PANX1 Polyclonal antibody

Catalog Number: 12595-1-AP

Featured Product

15 Publications



Basic Information

Catalog Number: 12595-1-AP	GenBank Accession Number: BC016931	Purification Method: Antigen affinity purification
Size: 150ul , Concentration: 700 µg/ml by Nanodrop;	GeneID (NCBI): 24145	Recommended Dilutions: WB 1:1000-1:6000
Source: Rabbit	Full Name: pannexin 1	
Isotype: IgG	Calculated MW: 426 aa, 48 kDa	
Immunogen Catalog Number: AG3174	Observed MW: 45-50 kDa, 90 kDa	

Applications

Tested Applications: WB, ELISA	Positive Controls: WB : Jurkat cells, SH-SY5Y cells, K-562 cells, MDA-MB-231 cells, C2C12 cells
Cited Applications: IF, IHC, WB	
Species Specificity: human, mouse	
Cited Species: human, rat, mouse	

Background Information

PANX1, also named as MRS1, belongs to the pannexin family. It plays a role as a Ca²⁺-leak channel to regulate ER Ca²⁺ homeostasis. It is a structural component of the gap junctions and the hemichannels. PANX1 induced the formation of intercellular channels with characteristics of gap junctions. PANX1 is 48-kDa protein which contains 4 transmembrane domains and cytoplasmic N and C termini. It is a mediator of find-me signal/nucleotide release from apoptotic cells. Western blot for Panx1 was also seen in two bands at 45-50 kDa and ~90 kDa. The band of ~90 kDa corresponding to the Panx1 dimer size. (PMID: 24590064, PMID: 19009624)

Notable Publications

Author	Pubmed ID	Journal	Application
Mohsan Saeed	32997711	PLoS Pathog	WB
Chang Chen	34506603	PLoS One	WB,IF
Guanwen Huang	32416166	Life Sci	WB,IHC

Storage

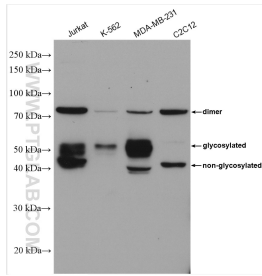
Storage:
Store at -20°C. Stable for one year after shipment.
Storage Buffer:
PBS with 0.02% sodium azide and 50% glycerol pH 7.3.
Aliquoting is unnecessary for -20°C storage

*** 20ul sizes contain 0.1% BSA

For technical support and original validation data for this product please contact:
T: 1 (888) 4PTGLAB (1-888-478-4522) (toll free in USA), or 1(312) 455-8498 (outside USA)
E: proteintech@ptglab.com
W: ptglab.com

This product is exclusively available under Proteintech Group brand and is not available to purchase from any other manufacturer.

Selected Validation Data



Various lysates were subjected to SDS PAGE followed by western blot with 12595-1-AP (PANX1 antibody) at dilution of 1:3000 incubated at room temperature for 1.5 hours.