

For Research Use Only

OLFM3 Polyclonal antibody, PBS Only

Catalog Number:12596-1-PBS



Basic Information

Catalog Number:
12596-1-PBS

Size:
100ug , Concentration: 1 mg/ml by
Nanodrop;

Source:
Rabbit

Isotype:
IgG

Immunogen Catalog Number:
AG3207

GenBank Accession Number:
BC022531

GeneID (NCBI):
118427

UNIPROT ID:
Q96PB7

Full Name:
olfactomedin 3

Calculated MW:
458 aa, 53 kDa

Observed MW:
50-55 kDa

Purification Method:

Antigen affinity purification

Applications

Tested Applications:

WB, IHC, IF/ICC, Indirect ELISA

Species Specificity:

human, mouse

Background Information

OLFM3, also known as Noelin-3, belongs to a larger family of proteins containing the olfactomedin domain. OLFM3, which is most closely related to OLFM2, is expressed in the retinal ganglion and inner nuclear layers of the adult rat retina (PMID: 12019210).

Storage

Storage:

Store at -80°C.

Storage Buffer:

PBS only, pH7.3

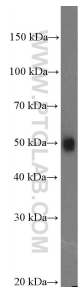
For technical support and original validation data for this product please contact:

T: 1 (888) 4PTGLAB (1-888-478-4522) (toll free
in USA), or 1(312) 455-8498 (outside USA)

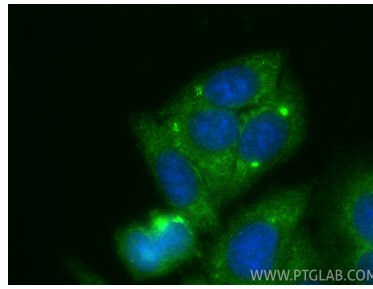
E: proteintech@ptglab.com
W: ptglab.com

This product is exclusively available under Proteintech Group brand and is not available to purchase from any other manufacturer.

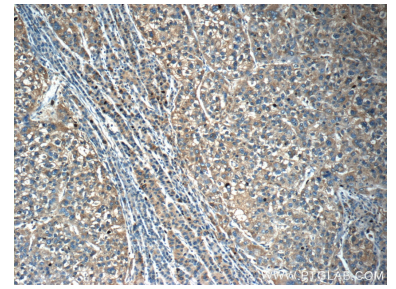
Selected Validation Data



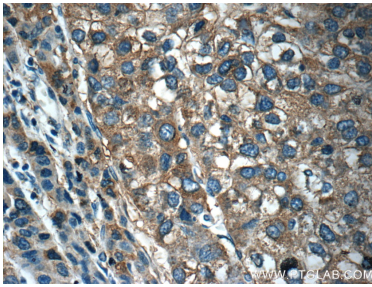
PC-3 cells were subjected to SDS PAGE followed by western blot with 12596-1-AP (OLFM3 Antibody) at dilution of 1:1000 incubated at room temperature for 1.5 hours. This data was developed using the same antibody clone with 12596-1-PBS in a different storage buffer formulation.



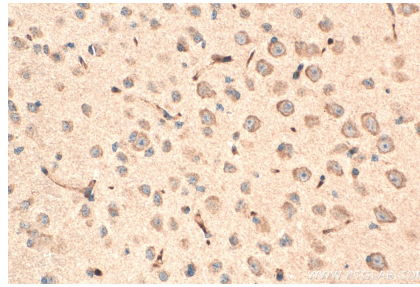
Immunofluorescent analysis of (-20°C Ethanol) fixed HepG2 cells using OLFM3 antibody (12596-1-AP) at dilution of 1:200 and CoraLite®488-Conjugated Goat Anti-Rabbit IgG(H+L) (SA00013-2). This data was developed using the same antibody clone with 12596-1-PBS in a different storage buffer formulation.



Immunohistochemical analysis of paraffin-embedded human liver cancer tissue slide using 12596-1-AP (OLFM3 Antibody) at dilution of 1:50 (under 10x lens). This data was developed using the same antibody clone with 12596-1-PBS in a different storage buffer formulation.



Immunohistochemical analysis of paraffin-embedded human liver cancer tissue slide using 12596-1-AP (OLFM3 Antibody) at dilution of 1:50 (under 40x lens). This data was developed using the same antibody clone with 12596-1-PBS in a different storage buffer formulation.



Immunohistochemical analysis of paraffin-embedded mouse brain tissue slide using 12596-1-AP (OLFM3 antibody) at dilution of 1:200 (under 40x lens). Heat mediated antigen retrieval with Tris-EDTA buffer (pH 9.0). This data was developed using the same antibody clone with 12596-1-PBS in a different storage buffer formulation.