

For Research Use Only

CTBS Polyclonal antibody

Catalog Number: 12599-1-AP



Basic Information

Catalog Number: 12599-1-AP	GenBank Accession Number: BC024007	Purification Method: Antigen affinity purification
Size: 150ul , Concentration: 300 µg/ml by Nanodrop and 133 µg/ml by Bradford method using BSA as the standard;	GeneID (NCBI): 1486	Recommended Dilutions: WB 1:500-1:1000 IHC 1:50-1:500 IF 1:10-1:100
Source: Rabbit	Full Name: chitinase, di-N-acetyl-	
Isotype: IgG	Calculated MW: 12 kDa, 43 kDa	
Immunogen Catalog Number: AG3228	Observed MW: 44-50 kDa	

Applications

Tested Applications: IF, IHC, WB, ELISA	Positive Controls:
Species Specificity: human, mouse, rat	WB : HeLa cells, HepG2 cells, MCF-7 cells, SMMC-7721 cells, mouse colon tissue
Note-IHC: suggested antigen retrieval with TE buffer pH 9.0; (*) Alternatively, antigen retrieval may be performed with citrate buffer pH 6.0	IHC : human prostate cancer tissue, human liver cancer tissue, human liver tissue, human kidney tissue
	IF : HepG2 cells,

Background Information

CTBS(Di-N-acetylchitinase (chitinase)) also named as CTB, is a lysosomal exoglycosidase that splits the GlcNAc β -D-(1-4)GlcNAc chitobiose core of asparagine-linked glycoproteins. Chitinase has been purified from human liver and kidney and rat liver. Both the human and rat enzymes are approximately 40-45 kDa and require a free reducing end GlcNAc for activity(PMID:1527079). This full length protein has a signal peptide and four glycosylation sites.

Storage

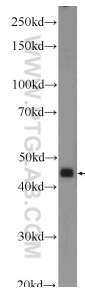
Storage:
Store at -20°C. Stable for one year after shipment.
Storage Buffer:
PBS with 0.02% sodium azide and 50% glycerol pH 7.3.
Aliquoting is unnecessary for -20°C storage

*** 20ul sizes contain 0.1% BSA

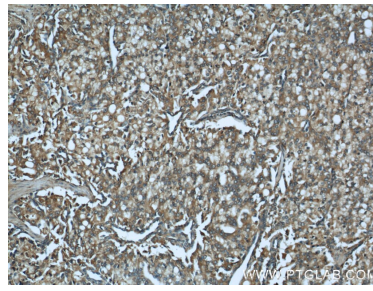
For technical support and original validation data for this product please contact:
T: 1 (888) 4PTGLAB (1-888-478-4522) (toll free in USA), or 1(312) 455-8498 (outside USA)
E: proteintech@ptglab.com
W: ptglab.com

This product is exclusively available under Proteintech Group brand and is not available to purchase from any other manufacturer.

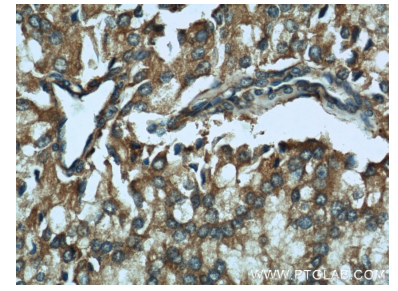
Selected Validation Data



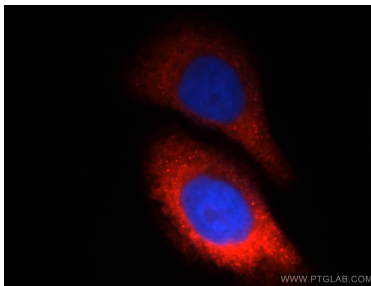
HeLa cells were subjected to SDS PAGE followed by western blot with 12599-1-AP (CTBS Antibody) at dilution of 1:600 incubated at 4 degree celsius over night.



Immunohistochemical analysis of paraffin-embedded human prostate cancer using 12599-1-AP (CTBS antibody) at dilution of 1:50 (under 10x lens).



Immunohistochemical analysis of paraffin-embedded human prostate cancer using 12599-1-AP (CTBS antibody) at dilution of 1:50 (under 40x lens).



Immunofluorescent analysis of HepG2 cells, using CTBS antibody 12599-1-AP at 1:25 dilution and Rhodamine-labeled goat anti-rabbit IgG (red). Blue pseudocolor = DAPI (fluorescent DNA dye).