

For Research Use Only

GUCY1A3 Polyclonal antibody

Catalog Number: 12605-1-AP **8 Publications**



Basic Information

Catalog Number: 12605-1-AP	GenBank Accession Number: BC028384	Purification Method: Antigen affinity purification
Size: 150ul , Concentration: 300 µg/ml by Nanodrop and 200 µg/ml by Bradford method using BSA as the standard;	GeneID (NCBI): 2982	Recommended Dilutions: WB 1:500-1:2000 IP 0.5-4.0 ug for 1.0-3.0 mg of total protein lysate IHC 1:20-1:200
Source: Rabbit	UNIPROT ID: Q02108	
Isotype: IgG	Full Name: guanylate cyclase 1, soluble, alpha 3	
Immunogen Catalog Number: AG3293	Calculated MW: 690 aa, 77 kDa	
	Observed MW: 77 kDa	

Applications

Tested Applications: IHC, IP, WB, ELISA	Positive Controls: WB : human brain tissue, human cerebellum tissue, human kidney tissue, mouse lung tissue IP : mouse lung tissue, IHC : human heart tissue,
Cited Applications: WB, IHC, IF	
Species Specificity: human, mouse, rat	
Cited Species: human, mouse	
Note-IHC: suggested antigen retrieval with TE buffer pH 9.0; (*) Alternatively, antigen retrieval may be performed with citrate buffer pH 6.0	

Notable Publications

Author	Pubmed ID	Journal	Application
Andrea de la Fuente-Alonso	33976159	Nat Commun	WB
Catarina Rippe	28465505	Sci Rep	WB, IHC
Wu Yang	34089528	Hepatology	IF

Storage

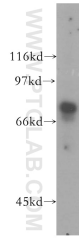
Storage:
Store at -20°C. Stable for one year after shipment.
Storage Buffer:
PBS with 0.02% sodium azide and 50% glycerol pH 7.3.
Aliquoting is unnecessary for -20°C storage

*** 20ul sizes contain 0.1% BSA

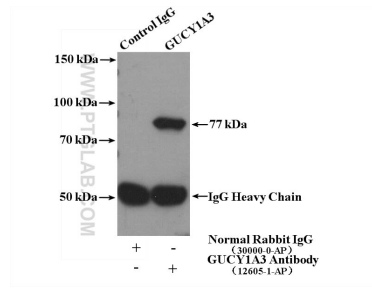
For technical support and original validation data for this product please contact:
T: 1 (888) 4PTGLAB (1-888-478-4522) (toll free in USA), or 1(312) 455-8498 (outside USA)
E: proteintech@ptglab.com
W: ptglab.com

This product is exclusively available under Proteintech Group brand and is not available to purchase from any other manufacturer.

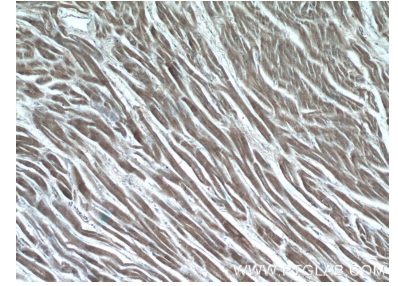
Selected Validation Data



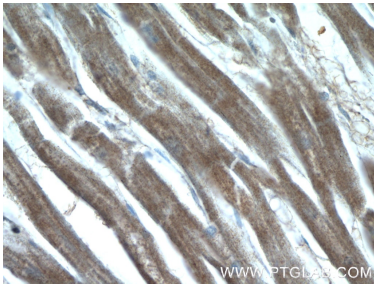
human brain tissue were subjected to SDS PAGE followed by western blot with 12605-1-AP (GUCY1A3 antibody) at dilution of 1:400 incubated at room temperature for 1.5 hours.



IP result of anti-GUCY1A3 (IP:12605-1-AP, 4ug; Detection:12605-1-AP 1:500) with mouse lung tissue lysate 3600ug.



Immunohistochemical analysis of paraffin-embedded human heart tissue slide using 12605-1-AP (GUCY1A3 Antibody) at dilution of 1:50 (under 10x lens).



Immunohistochemical analysis of paraffin-embedded human heart tissue slide using 12605-1-AP (GUCY1A3 Antibody) at dilution of 1:50 (under 40x lens).