

For Research Use Only

SCO1 Polyclonal antibody

Catalog Number: 12614-1-AP

2 Publications



Basic Information

Catalog Number:

12614-1-AP

Size:

150ul, Concentration: 600 ug/ml by Nanodrop and 333 ug/ml by Bradford method using BSA as the standard;

Source:

Rabbit

Isotype:

IgG

Immunogen Catalog Number:

AG3269

GenBank Accession Number:

BC015504

GeneID (NCBI):

6341

UNIPROT ID:

O75880

Full Name:

SCO cytochrome oxidase deficient homolog 1 (yeast)

Calculated MW:

301 aa, 34 kDa

Observed MW:

30 kDa

Purification Method:

Antigen affinity purification

Recommended Dilutions:

WB 1:500-1:1000

IHC 1:50-1:500

Applications

Tested Applications:

WB, IHC, ELISA

Cited Applications:

WB, IF, IP

Species Specificity:

human

Cited Species:

human, mouse

Note-IHC: suggested antigen retrieval with TE buffer pH 9.0; (*) Alternatively, antigen retrieval may be performed with citrate buffer pH 6.0

Positive Controls:

WB : HeLa cells, HepG2 cells, LNCaP cells, human heart tissue, human placenta tissue

IHC : human stomach cancer tissue,

Background Information

Human SCO1 and SCO2 are metallochaperones that are essential for the assembly of the catalytic core of cytochrome c oxidase (COX). SCO1 appears to be involved in the folding and assembly of cytochrome oxidase subunit II, and possibly of other proteins of this subcompartment. It is a 33 kDa protein which displays limited homology to members of the DnaJ family (PMID:14731768). It is also named as SCOD1 and belongs to the SCO1/2 family. It can exist as a homodimer (PMID:16735468). Defects in SCO1 are a cause of mitochondrial complex IV deficiency (MT-C4D).

Notable Publications

Author	Pubmed ID	Journal	Application
Liping Xie	36261001	Cell Rep	WB,IF,IP
Corey L Anderson	38718259	J Proteome Res	WB

Storage

Storage:

Store at -20°C. Stable for one year after shipment.

Storage Buffer:

PBS with 0.02% sodium azide and 50% glycerol pH 7.3.

Aliquoting is unnecessary for -20°C storage

*** 20ul sizes contain 0.1% BSA

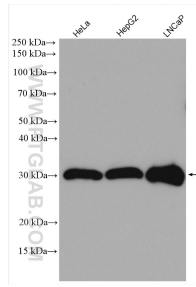
For technical support and original validation data for this product please contact:

T: 1 (888) 4PTGLAB (1-888-478-4522) (toll free in USA), or 1(312) 455-8498 (outside USA)

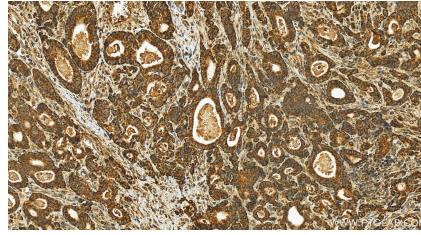
E: proteintech@ptglab.com
W: ptglab.com

This product is exclusively available under Proteintech Group brand and is not available to purchase from any other manufacturer.

Selected Validation Data



Various lysates were subjected to SDS PAGE followed by western blot with 12614-1-AP (SCO1 antibody) at dilution of 1:800 incubated at room temperature for 1.5 hours.



Immunohistochemical analysis of paraffin-embedded human stomach cancer tissue slide using 12614-1-AP (SCO1 antibody) at dilution of 1:100 (under 20x lens). Heat mediated antigen retrieval with Tris-EDTA buffer (pH 9.0).