

For Research Use Only

NIFK Polyclonal antibody

Catalog Number: 12615-1-AP **1 Publications**



Basic Information

Catalog Number: 12615-1-AP	GenBank Accession Number: BC024238	Purification Method: Antigen affinity purification
Size: 150ul , Concentration: 900 µg/ml by Nanodrop and 400 µg/ml by Bradford method using BSA as the standard;	GeneID (NCBI): 84365	Recommended Dilutions: WB 1:1000-1:8000 IHC 1:500-1:2000 IF 1:50-1:500
Source: Rabbit	Full Name: MKI67 (FHA domain) interacting nucleolar phosphoprotein	
Isotype: IgG	Calculated MW: 293 aa, 34 kDa	
Immunogen Catalog Number: AG3284	Observed MW: 34 kDa	

Applications

Tested Applications: IF, IHC, WB, ELISA	Positive Controls: WB : HeLa cells, HEK-293 cells, HepG2 cells
Cited Applications: WB	IHC : human liver cancer tissue, human renal cell carcinoma tissue
Species Specificity: human	IF : MCF-7 cells,
Cited Species: human	

Note-IHC: suggested antigen retrieval with TE buffer pH 9.0; (*) Alternatively, antigen retrieval may be performed with citrate buffer pH 6.0

Background Information

Notable Publications

Author	Pubmed ID	Journal	Application
Mio Iwasaki	35573189	iScience	WB

Storage

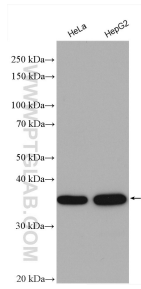
Storage:
Store at -20°C. Stable for one year after shipment.
Storage Buffer:
PBS with 0.02% sodium azide and 50% glycerol pH 7.3.
Aliquoting is unnecessary for -20°C storage

*** 20ul sizes contain 0.1% BSA

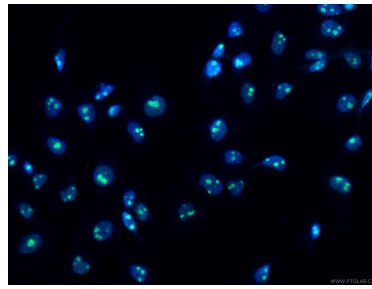
For technical support and original validation data for this product please contact:
T: 1 (888) 4PTGLAB (1-888-478-4522) (toll free in USA), or 1(312) 455-8498 (outside USA) E: proteintech@ptglab.com
W: ptglab.com

This product is exclusively available under Proteintech Group brand and is not available to purchase from any other manufacturer.

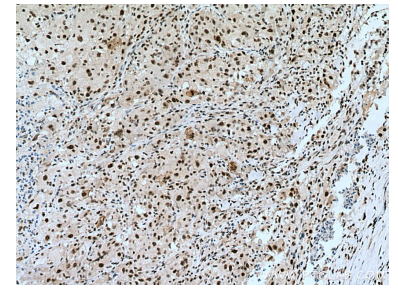
Selected Validation Data



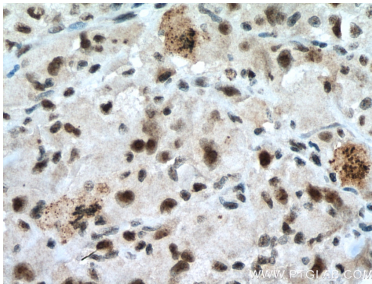
Various lysates were subjected to SDS PAGE followed by western blot with 12615-1-AP (NIFK antibody) at dilution of 1:4000 incubated at room temperature for 1.5 hours.



Immunofluorescent analysis of (4% PFA) fixed MCF-7 cells using 12615-1-AP (NIFK antibody), at dilution of 1:200 and CoraLite®488-Conjugated AffiniPure Goat Anti-Rabbit IgG(H+L).



Immunohistochemical analysis of paraffin-embedded human liver cancer tissue slide using 12615-1-AP (NIFK antibody) at dilution of 1:1000 (under 10x lens). Heat mediated antigen retrieval with Tris-EDTA buffer (pH 9.0).



Immunohistochemical analysis of paraffin-embedded human liver cancer tissue slide using 12615-1-AP (NIFK antibody) at dilution of 1:1000 (under 40x lens). Heat mediated antigen retrieval with Tris-EDTA buffer (pH 9.0).