

For Research Use Only

RFX2 Polyclonal antibody

Catalog Number: 12622-1-AP

1 Publications



Basic Information

Catalog Number:

12622-1-AP

Size:

150ul, Concentration: 450 ug/ml by Nanodrop;

Source:

Rabbit

Isotype:

IgG

Immunogen Catalog Number:

AG3310

GenBank Accession Number:

BC028579

GeneID (NCBI):

5990

UNIPROT ID:

P48378

Full Name:

regulatory factor X, 2 (influences HLA class II expression)

Calculated MW:

723 aa, 80 kDa

Observed MW:

80 kDa

Purification Method:

Antigen affinity purification

Recommended Dilutions:

WB 1:1000-1:6000

IP 0.5-4.0 ug for 1.0-3.0 mg of total protein lysate

IHC 1:50-1:500

Applications

Tested Applications:

WB, IHC, IP, ELISA

Cited Applications:

WB, IHC

Species Specificity:

human, mouse, rat

Cited Species:

mouse

Positive Controls:

WB : THP-1 cells,

IP : THP-1 cells,

IHC : rat testis tissue, mouse testis tissue

Note-IHC: suggested antigen retrieval with TE buffer pH 9.0; (*) Alternatively, antigen retrieval may be performed with citrate buffer pH 6.0

Background Information

RFX2 is a key regulator of ciliogenesis in vertebrates, and knockdown of Rfx2 causes defects in neural tube closure and in left-right axis patterning (PMID: 26248850). RFX2 expression is greatly enhanced in adult testis and that RFX2 is equally prominent in highly enriched populations of late pachytene spermatocytes and round spermatids (PMID: 22227339). RFX2 is also required for the development of left-right asymmetry, and motile cilia on RFX2-expressing cells are sufficient to establish adequate fluid flow across the COA to direct normal LR development in mouse (PMID: 22233545).

Notable Publications

Author	Pubmed ID	Journal	Application
Shintaro Mikami	35714115	PLoS One	WB, IHC

Storage

Storage:

Store at -20°C. Stable for one year after shipment.

Storage Buffer:

PBS with 0.02% sodium azide and 50% glycerol, pH7.3

Aliquoting is unnecessary for -20°C storage

*** 20ul sizes contain 0.1% BSA

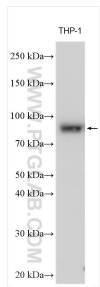
For technical support and original validation data for this product please contact:

T: 1 (888) 4PTGLAB (1-888-478-4522) (toll free in USA), or 1(312) 455-8498 (outside USA)

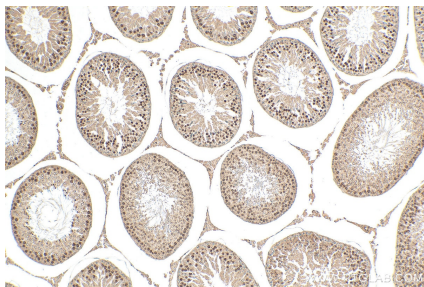
E: proteintech@ptglab.com
W: ptglab.com

This product is exclusively available under Proteintech Group brand and is not available to purchase from any other manufacturer.

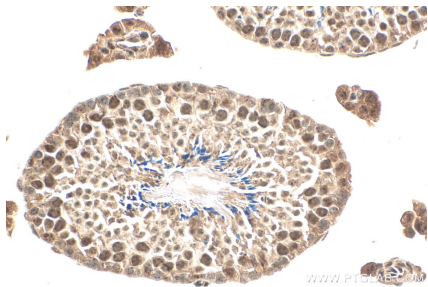
Selected Validation Data



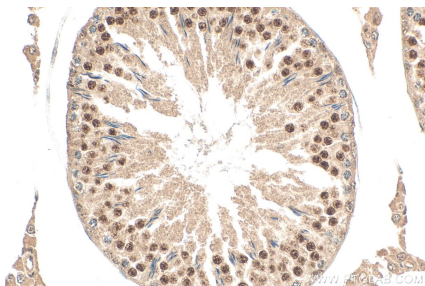
Various lysates were subjected to SDS PAGE followed by western blot with 12622-1-AP (RFX2 antibody) at dilution of 1:3000 incubated at room temperature for 1.5 hours.



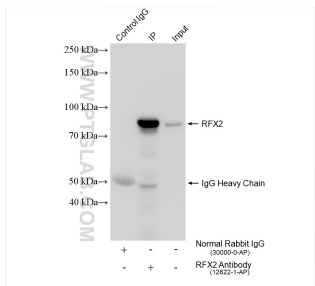
Immunohistochemical analysis of paraffin-embedded rat testis tissue slide using 12622-1-AP (RFX2 antibody) at dilution of 1:200 (under 10x lens). Heat mediated antigen retrieval with Tris-EDTA buffer (pH 9.0).



Immunohistochemical analysis of paraffin-embedded mouse testis tissue slide using 12622-1-AP (RFX2 antibody) at dilution of 1:200 (under 40x lens). Heat mediated antigen retrieval with Tris-EDTA buffer (pH 9.0).



Immunohistochemical analysis of paraffin-embedded rat testis tissue slide using 12622-1-AP (RFX2 antibody) at dilution of 1:200 (under 40x lens). Heat mediated antigen retrieval with Tris-EDTA buffer (pH 9.0).



IP result of anti-RFX2 (IP:12622-1-AP, 4ug; Detection:12622-1-AP 1:1000) with THP-1 cells lysate 1920 ug.