

For Research Use Only

# RFX2 Polyclonal antibody, PBS Only

Catalog Number:12622-1-PBS



## Basic Information

**Catalog Number:**

12622-1-PBS

**Size:**

100ug , Concentration: 1 mg/ml by Nanodrop;

**Source:**

Rabbit

**Isotype:**

IgG

**Immunogen Catalog Number:**

AG3310

**GenBank Accession Number:**

BC028579

**GeneID (NCBI):**

5990

**UNIPROT ID:**

P48378

**Full Name:**

regulatory factor X, 2 (influences HLA class II expression)

**Calculated MW:**

723 aa, 80 kDa

**Observed MW:**

80 kDa

**Purification Method:**

Antigen affinity purification

## Applications

**Tested Applications:**

WB, IHC, IP, Indirect ELISA

**Species Specificity:**

human, mouse, rat

## Background Information

RFX2 is a key regulator of ciliogenesis in vertebrates, and knockdown of Rfx2 causes defects in neural tube closure and in left-right axis patterning (PMID: 26248850). RFX2 expression is greatly enhanced in adult testis and that RFX2 is equally prominent in highly enriched populations of late pachytene spermatocytes and round spermatids (PMID: 22227339). RFX2 is also required for the development of left-right asymmetry, and motile cilia on RFX2-expressing cells are sufficient to establish adequate fluid flow across the COA to direct normal LR development in mouse (PMID: 22233545).

## Storage

**Storage:**

Store at -80°C.

**Storage Buffer:**

PBS only, pH7.3

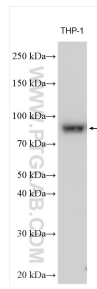
For technical support and original validation data for this product please contact:

T: 1 (888) 4PTGLAB (1-888-478-4522) (toll free in USA), or 1(312) 455-8498 (outside USA)

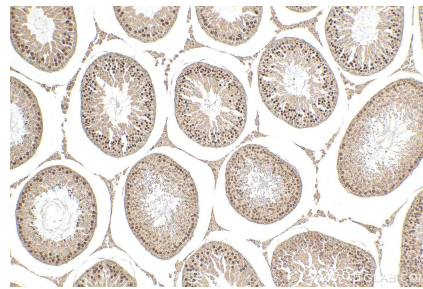
E: [proteintech@ptglab.com](mailto:proteintech@ptglab.com)  
W: [ptglab.com](http://ptglab.com)

**This product is exclusively available under Proteintech Group brand and is not available to purchase from any other manufacturer.**

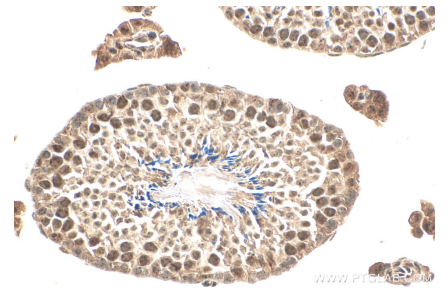
## Selected Validation Data



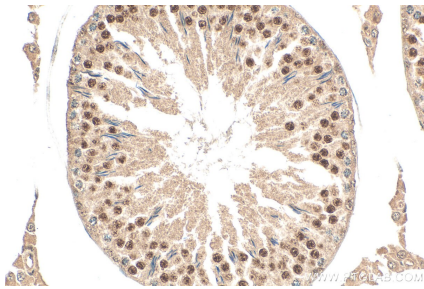
Various lysates were subjected to SDS PAGE followed by western blot with 12622-1-AP (RFX2 antibody) at dilution of 1:3000 incubated at room temperature for 1.5 hours. This data was developed using the same antibody clone with 12622-1-PBS in a different storage buffer formulation.



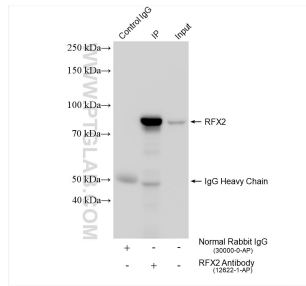
Immunohistochemical analysis of paraffin-embedded rat testis tissue slide using 12622-1-AP (RFX2 antibody) at dilution of 1:200 (under 10x lens). Heat mediated antigen retrieval with Tris-EDTA buffer (pH 9.0). This data was developed using the same antibody clone with 12622-1-PBS in a different storage buffer formulation.



Immunohistochemical analysis of paraffin-embedded mouse testis tissue slide using 12622-1-AP (RFX2 antibody) at dilution of 1:200 (under 40x lens). Heat mediated antigen retrieval with Tris-EDTA buffer (pH 9.0). This data was developed using the same antibody clone with 12622-1-PBS in a different storage buffer formulation.



Immunohistochemical analysis of paraffin-embedded rat testis tissue slide using 12622-1-AP (RFX2 antibody) at dilution of 1:200 (under 40x lens). Heat mediated antigen retrieval with Tris-EDTA buffer (pH 9.0). This data was developed using the same antibody clone with 12622-1-PBS in a different storage buffer formulation.



IP result of anti-RFX2 (IP:12622-1-AP, 4ug; Detection:12622-1-AP 1:1000) with THP-1 cells lysate 1920 ug. This data was developed using the same antibody clone with 12622-1-PBS in a different storage buffer formulation.