

For Research Use Only

# CCT6B Polyclonal antibody

Catalog Number: 12628-1-AP **1 Publications**



## Basic Information

<b>Catalog Number:</b> 12628-1-AP	<b>GenBank Accession Number:</b> BC027591	<b>Purification Method:</b> Antigen affinity purification
<b>Size:</b> 150ul , Concentration: 313 µg/ml by Bradford method using BSA as the standard;	<b>GeneID (NCBI):</b> 10693	<b>Recommended Dilutions:</b> WB 1:500-1:2000
<b>Source:</b> Rabbit	<b>Full Name:</b> chaperonin containing TCP1, subunit 6B (zeta 2)	
<b>Isotype:</b> IgG	<b>Calculated MW:</b> 530 aa, 58 kDa	
<b>Immunogen Catalog Number:</b> AG3321	<b>Observed MW:</b> 58 kDa	

## Applications

<b>Tested Applications:</b> WB,ELISA	<b>Positive Controls:</b> WB : mouse ovary tissue,
<b>Cited Applications:</b> WB	
<b>Species Specificity:</b> human, mouse, rat	
<b>Cited Species:</b> human	

## Background Information

CCT6B, also named as CCT-zeta-2, TCP-1-zeta-like, CCT-zeta-like, testis-specific Tcp20 and testis-specific protein TSA303, belongs to the TCP-1 chaperonin family. CCT6B is a molecular chaperone which assists the folding of proteins upon ATP hydrolysis. It is known to play a role in vitro, in the folding of actin and tubulin. This antibody can recognize both of CCT6A and CCT6B.

## Notable Publications

Author	Pubmed ID	Journal	Application
Yamabe K K	20331799	Mol Oral Microbiol	WB

## Storage

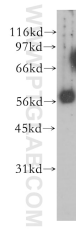
**Storage:**  
Store at -20°C. Stable for one year after shipment.  
**Storage Buffer:**  
PBS with 0.02% sodium azide and 50% glycerol pH 7.3.  
Aliquoting is unnecessary for -20°C storage

\*\*\* 20ul sizes contain 0.1% BSA

For technical support and original validation data for this product please contact:  
T: 1 (888) 4PTGLAB (1-888-478-4522) (toll free in USA), or 1(312) 455-8498 (outside USA)  
E: proteintech@ptglab.com  
W: ptglab.com

This product is exclusively available under Proteintech Group brand and is not available to purchase from any other manufacturer.

## Selected Validation Data



mouse ovary tissue were subjected to SDS PAGE followed by western blot with 12628-1-AP (CCT6B antibody) at dilution of 1:500 incubated at room temperature for 1.5 hours.