

For Research Use Only

CIAPIN1 Polyclonal antibody

Catalog Number: 12638-1-AP

Featured Product

5 Publications



Basic Information

Catalog Number: 12638-1-AP	GenBank Accession Number: BC024196	Purification Method: Antigen affinity purification
Size: 150ul, Concentration: 500 µg/ml by Nanodrop and 313 µg/ml by Bradford method using BSA as the standard;	GeneID (NCBI): 57019	Recommended Dilutions: WB 1:500-1:3000 IHC 1:50-1:500 IF 1:10-1:100
Source: Rabbit	Full Name: cytokine induced apoptosis inhibitor 1	
Isotype: IgG	Calculated MW: 312 aa, 34 kDa	
Immunogen Catalog Number: AG3333	Observed MW: 34 kDa	

Applications

Tested Applications:

IF, IHC, WB, ELISA

Cited Applications:

WB

Species Specificity:

human, mouse, rat

Cited Species:

human, rat, mouse

Note-IHC: suggested antigen retrieval with TE buffer pH 9.0; (*) Alternatively, antigen retrieval may be performed with citrate buffer pH 6.0

Positive Controls:

WB : BxPC-3 cells, HeLa cells, Jurkat cells, K-562 cells, mouse brain tissue, mouse liver tissue

IHC : human heart tissue,

IF : HeLa cells,

Background Information

The cytokine-induced anti-apoptotic molecule (CIAPIN1, or DRE2) had been found to be a differentially-expressed gene involved in a variety of cancers, and it was also considered as a candidate tumor suppressor gene in gastric cancer, renal cancer and liver cancer. CIAPIN1 plays an important role in the differentiation of colorectal cancer (CRC) cells, and the differential expression of CIAPIN1 in CRC was closely related to prognosis. CIAPIN1 might play an important role in esophageal carcinogenesis, and it could be considered as a valuable prognostic indicator in esophageal squamous cell carcinoma (ESCC).

Notable Publications

Author	Pubmed ID	Journal	Application
Zhiwei Chen	34386429	Front Oncol	WB
Ki Soon Kim	29309586	Hum Mol Genet	WB
Nunziata Maio	30765471	Haematologica	WB

Storage

Storage:

Store at -20°C. Stable for one year after shipment.

Storage Buffer:

PBS with 0.02% sodium azide and 50% glycerol pH 7.3.

Aliquoting is unnecessary for -20°C storage

*** 20ul sizes contain 0.1% BSA

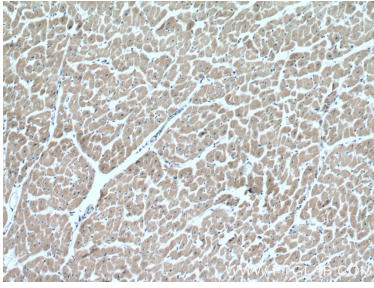
For technical support and original validation data for this product please contact:

T: 1 (888) 4PTGLAB (1-888-478-4522) (toll free in USA), or 1(312) 455-8498 (outside USA)

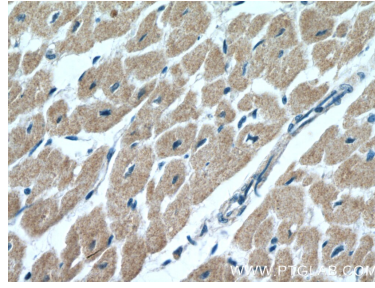
E: proteintech@ptglab.com
W: ptglab.com

This product is exclusively available under Proteintech Group brand and is not available to purchase from any other manufacturer.

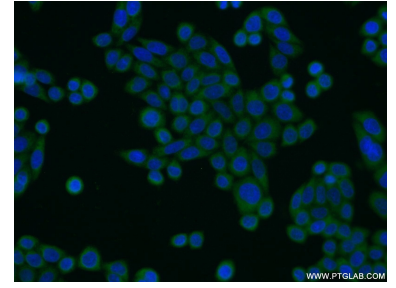
Selected Validation Data



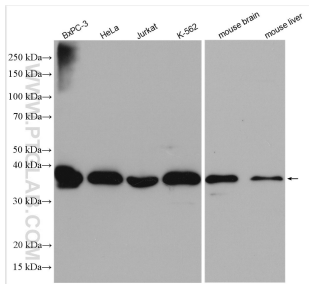
Immunohistochemical analysis of paraffin-embedded human heart tissue slide using 12638-1-AP (CIAPIN1 antibody) at dilution of 1:200 (under 10x lens).



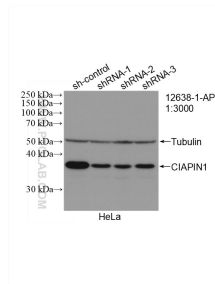
Immunohistochemical analysis of paraffin-embedded human heart tissue slide using 12638-1-AP (CIAPIN1 antibody) at dilution of 1:200 (under 40x lens).



Immunofluorescent analysis of HeLa cells using 12638-1-AP (CIAPIN1 antibody) at dilution of 1:25 and Alexa Fluor 488-conjugated AffiniPure Goat Anti-Rabbit IgG(H+L).



Various lysates were subjected to SDS PAGE followed by western blot with 12638-1-AP (CIAPIN1 antibody) at dilution of 1:1500 incubated at room temperature for 1.5 hours.



WB result of CIAPIN1 antibody (12638-1-AP; 1:3000; incubated at room temperature for 1.5 hours) with sh-Control and sh-CIAPIN1 transfected HeLa cells.