

For Research Use Only

golgin 97 Polyclonal antibody

Catalog Number: 12640-1-AP

30 Publications



Basic Information

Catalog Number:

12640-1-AP

Size:

150ul, Concentration: 800 ug/ml by Nanodrop;

Source:

Rabbit

Isotype:

IgG

Immunogen Catalog Number:

AG3335

GenBank Accession Number:

BC032853

GeneID (NCBI):

2800

UNIPROT ID:

Q92805

Full Name:

golgi autoantigen, golgin subfamily a, 1

Calculated MW:

767 aa, 88 kDa

Observed MW:

97 kDa

Purification Method:

Antigen affinity purification

Recommended Dilutions:

WB: 1:2000-1:16000

IF/ICC: 1:500-1:2000

FC (Intra): 0.40 ug per 10⁶ cells in a 100 µl suspension

Applications

Tested Applications:

WB, IF/ICC, FC (Intra), ELISA

Cited Applications:

WB, IHC, IF, IP

Species Specificity:

human

Cited Species:

human, mouse, monkey

Positive Controls:

WB: HEK-293 cells, SMMC-7721 cells, HeLa cells, HepG2 cells

IF/ICC: HeLa cells,

FC (Intra): HeLa cells,

Background Information

Golgin subfamily A member 1 is a protein that in humans is encoded by the GOLGA1 gene. GOLGA1 has been shown to interact with ARL1. GOLGA1 is associated with Sjogren's syndrome. The MW of this protein is 97 kDa, and Catalog# 12640-1-AP specially recognises the 97 kDa protein. IF result shows strong Golgi staining.

Notable Publications

Author	Pubmed ID	Journal	Application
Mengyue You	36252341	Redox Biol	IF
Chengfeng Merriman	31591269	J Biol Chem	WB
Rachel E Turn	34818063	Mol Biol Cell	IHC

Storage

Storage:

Store at -20°C. Stable for one year after shipment.

Storage Buffer:

PBS with 0.02% sodium azide and 50% glycerol, pH7.3

Aliquoting is unnecessary for -20°C storage

*** 20ul sizes contain 0.1% BSA

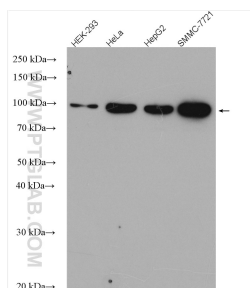
For technical support and original validation data for this product please contact:

T: 1 (888) 4PTGLAB (1-888-478-4522) (toll free in USA), or 1(312) 455-8498 (outside USA)

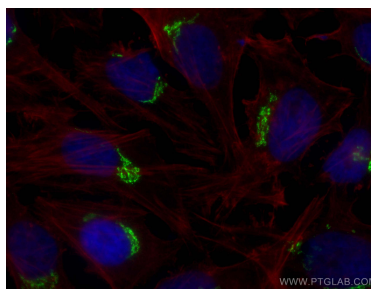
E: proteintech@ptglab.com
W: ptglab.com

This product is exclusively available under Proteintech Group brand and is not available to purchase from any other manufacturer.

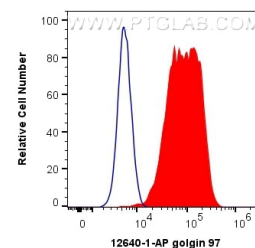
Selected Validation Data



Various lysates were subjected to SDS PAGE followed by western blot with 12640-1-AP (golgin 97 antibody) at dilution of 1:8000 incubated at room temperature for 1.5 hours.



Immunofluorescent analysis of (4% PFA) fixed HeLa cells using golgin 97 antibody (12640-1-AP) at dilution of 1:1000 and CoraLite®488-Conjugated Goat Anti-Rabbit IgG(H+L), CL594-phalloidin (red).



1X10⁶ HeLa cells were intracellularly stained with 0.4 ug Anti-Human golgin 97 (12640-1-AP) and CoraLite®488-Conjugated Goat Anti-Rabbit IgG(H+L) at dilution 1:1000 (red), or 0.4 ug Isotype Control. Cells were fixed with 4% PFA and permeabilized with Flow Cytometry Perm Buffer (PF00011-C).