

For Research Use Only

PDIK1L Polyclonal antibody

Catalog Number: 12646-1-AP



Basic Information

Catalog Number: 12646-1-AP	GenBank Accession Number: BC028713	Purification Method: Antigen affinity purification
Size: 150ul , Concentration: 750 ug/ml by Nanodrop;	GeneID (NCBI): 149420	Recommended Dilutions: WB 1:1000-1:4000
Source: Rabbit	UNIPROT ID: Q8N165	
Isotype: IgG	Full Name: PDLIM1 interacting kinase 1 like	
Immunogen Catalog Number: AG3356	Calculated MW: 341 aa, 39 kDa	
	Observed MW: 39 kDa	

Applications

Tested Applications: WB, ELISA	Positive Controls: WB : rat spleen tissue, mouse spleen tissue
Species Specificity: mouse, rat	

Background Information

PDIK1L, also known as CLK1L, belongs to the protein kinase superfamily and Ser/Thr protein kinase family. PDIK1L is a protein kinase associated with CLP-36-interacting kinase and is widely expressed in many organs and tissues. PDIK1L also expresses in endometriotic cells abundantly and stromal fibroblast moderately, and this protein would be released into the abdominal cavity during menstruation cycles and could elicit an auto-antibody reaction (PMID: 20403595, PMID: 33722753).

Storage

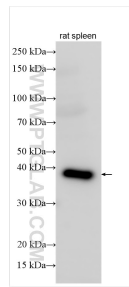
Storage:
Store at -20°C. Stable for one year after shipment.
Storage Buffer:
PBS with 0.02% sodium azide and 50% glycerol pH 7.3.
Aliquoting is unnecessary for -20°C storage

*** 20ul sizes contain 0.1% BSA

For technical support and original validation data for this product please contact:
T: 1 (888) 4PTGLAB (1-888-478-4522) (toll free in USA), or 1(312) 455-8498 (outside USA)
E: proteintech@ptglab.com
W: ptglab.com

This product is exclusively available under Proteintech Group brand and is not available to purchase from any other manufacturer.

Selected Validation Data



rat spleen tissue were subjected to SDS PAGE followed by western blot with 12646-1-AP (PDIK1L antibody) at dilution of 1:2000 incubated at room temperature for 1.5 hours.