

For Research Use Only

# LANCL1 Polyclonal antibody

Catalog Number: 12647-1-AP

Featured Product

4 Publications



## Basic Information

### Catalog Number:

12647-1-AP

### Size:

150ul, Concentration: 260 ug/ml by Nanodrop and 240 ug/ml by Bradford method using BSA as the standard;

### Source:

Rabbit

### Isotype:

IgG

### Immunogen Catalog Number:

AG3361

### GenBank Accession Number:

BC028685

### GeneID (NCBI):

10314

### UNIPROT ID:

O43813

### Full Name:

LanC lantibiotic synthetase component C-like 1 (bacterial)

### Calculated MW:

399 aa, 45 kDa

### Observed MW:

40 kDa

### Purification Method:

Antigen affinity purification

### Recommended Dilutions:

WB 1:500-1:1000

IHC 1:50-1:500

IF/ICC 1:50-1:500

## Applications

### Tested Applications:

WB, IHC, IF/ICC, ELISA

### Cited Applications:

WB, IHC, IF

### Species Specificity:

human, mouse

### Cited Species:

human, mouse

**Note-IHC: suggested antigen retrieval with TE buffer pH 9.0; (\*) Alternatively, antigen retrieval may be performed with citrate buffer pH 6.0**

### Positive Controls:

WB : mouse testis tissue,

IHC : mouse brain tissue,

IF/ICC : U-251 cells,

## Background Information

LanCL1 (also known as P40 or GRP69A), is homologous to bacterial lanthionine synthetase C (LanC) family, which is involved in the biosynthesis of antimicrobial peptides (lantibiotics). LanCL1 was identified as a reduced glutathione (GSH)-binding protein and primarily expressed in neural tissues and testis.

## Notable Publications

Author	Pubmed ID	Journal	Application
Fangxing Zhang	33117306	Front Microbiol	IHC
Debapriya Dutta	29880530	J Lipid Res	WB
Jianqing Wang	29416001	Cell Death Dis	WB

## Storage

### Storage:

Store at -20°C. Stable for one year after shipment.

### Storage Buffer:

PBS with 0.02% sodium azide and 50% glycerol pH 7.3.

Aliquoting is unnecessary for -20°C storage

\*\*\* 20ul sizes contain 0.1% BSA

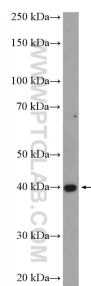
For technical support and original validation data for this product please contact:

T: 1 (888) 4PTGLAB (1-888-478-4522) (toll free in USA), or 1(312) 455-8498 (outside USA)

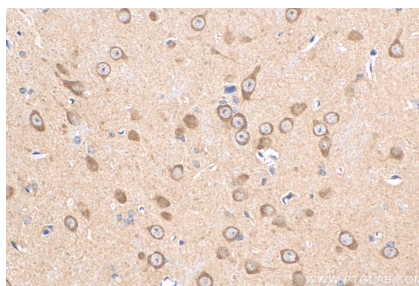
E: [proteintech@ptglab.com](mailto:proteintech@ptglab.com)  
W: [ptglab.com](http://ptglab.com)

This product is exclusively available under Proteintech Group brand and is not available to purchase from any other manufacturer.

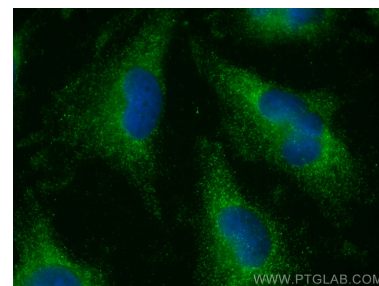
## Selected Validation Data



mouse testis tissue were subjected to SDS PAGE followed by western blot with 12647-1-AP (LANCL1 antibody) at dilution of 1:600 incubated at room temperature for 1.5 hours.



Immunohistochemical analysis of paraffin-embedded mouse brain tissue slide using 12647-1-AP (LANCL1 antibody) at dilution of 1:200 (under 40x lens). Heat mediated antigen retrieval with Tris-EDTA buffer (pH 9.0).



Immunofluorescent analysis of (-20°C Ethanol) fixed U-251 cells using LANCL1 antibody (12647-1-AP) at dilution of 1:200 and CoraLite®488-Conjugated AffiniPure Goat Anti-Rabbit IgG(H+L).