

For Research Use Only

# PDE9A Polyclonal antibody, PBS Only

Catalog Number: 12648-1-PBS



## Basic Information

**Catalog Number:**

12648-1-PBS

**Size:**

100ug , Concentration: 1 mg/ml by Nanodrop;

**Source:**

Rabbit

**Isotype:**

IgG

**Immunogen Catalog Number:**

AG3372

**GenBank Accession Number:**

BC009047

**GeneID (NCBI):**

5152

**UNIPROT ID:**

O76083

**Full Name:**

phosphodiesterase 9A

**Calculated MW:**

68 kDa

**Observed MW:**

50 kDa

**Purification Method:**

Antigen affinity purification

## Applications

**Tested Applications:**

IHC, IF/ICC, Indirect ELISA

**Species Specificity:**

human, mouse

## Background Information

Cyclic nucleotide phosphodiesterases (PDEs), which hydrolyze the intracellular second messengers cAMP and cGMP to their corresponding monophosphates, play an important role in signal transduction by regulating the intracellular concentration of cyclic nucleotides. PDE9A plays a role in signal transduction by regulating the intracellular concentration of these cyclic nucleotides. Multiple transcript variants encoding several different isoforms have been found for this gene. This protein has 16 isoforms with the MW between 44 kDa and 65 kDa.

## Storage

**Storage:**

Store at -80°C.

**Storage Buffer:**

PBS Only

For technical support and original validation data for this product please contact:

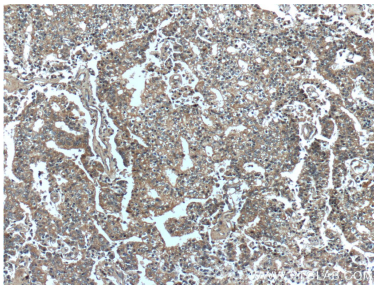
T: 1 (888) 4PTGLAB (1-888-478-4522) (toll free in USA), or 1(312) 455-8498 (outside USA)

E: [proteintech@ptglab.com](mailto:proteintech@ptglab.com)

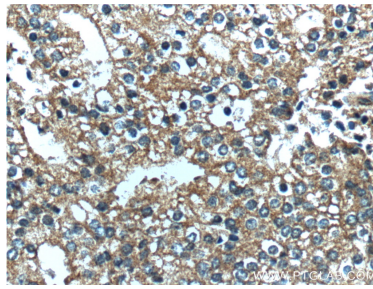
W: [ptglab.com](http://ptglab.com)

This product is exclusively available under Proteintech Group brand and is not available to purchase from any other manufacturer.

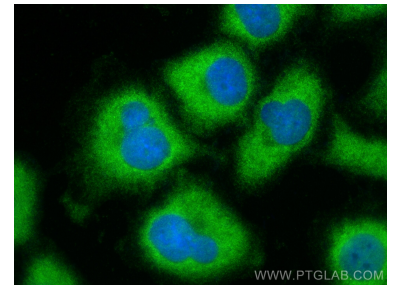
## Selected Validation Data



Immunohistochemical analysis of paraffin-embedded human prostate cancer tissue slide using 12648-1-AP (PDE9A Antibody) at dilution of 1:200 (under 10x lens). This data was developed using the same antibody clone with 12648-1-PBS in a different storage buffer formulation.



Immunohistochemical analysis of paraffin-embedded human prostate cancer tissue slide using 12648-1-AP (PDE9A Antibody) at dilution of 1:200 (under 40x lens). This data was developed using the same antibody clone with 12648-1-PBS in a different storage buffer formulation.



Immunofluorescent analysis of (-20°C Methanol) fixed A549 cells using PDE9A antibody (12648-1-AP) at dilution of 1:400 and CoraLite®488-Conjugated Goat Anti-Rabbit IgG(H+L) (SA00013-2). This data was developed using the same antibody clone with 12648-1-PBS in a different storage buffer formulation.