

For Research Use Only

TMEM16A/DOG1 Polyclonal antibody



Catalog Number: 12652-1-AP

7 Publications

Basic Information

Catalog Number: 12652-1-AP	GenBank Accession Number: BC027590	Purification Method: Antigen affinity purification
Size: 150ul , Concentration: 350 µg/ml by Nanodrop and 240 µg/ml by Bradford method using BSA as the standard;	GeneID (NCBI): 55107	Recommended Dilutions: IHC 1:250-1:1000
Source: Rabbit	Full Name: anoctamin 1, calcium activated chloride channel	
Isotype: IgG	Calculated MW: 986 aa, 114 kDa	
Immunogen Catalog Number: AG3320	Observed MW: 114 kDa	

Applications

Tested Applications: IHC, ELISA	Positive Controls: IHC : human stomach cancer tissue,
Cited Applications: IF, IHC, WB	
Species Specificity: human, mouse	
Cited Species: human, rat, mouse	
Note-IHC: suggested antigen retrieval with TE buffer pH 9.0; (*) Alternatively, antigen retrieval may be performed with citrate buffer pH 6.0	

Background Information

ANO1 also named as DOG1, ORAOV2, TAOS2 and TMEM16A, acts as a calcium-activated chloride channel. It is required for normal tracheal development. ANO1 (or DOG1) is used as an aid in the identification and diagnosis of gastrointestinal stromal tumors (GIST) within the context of an antibody panel, the patient's clinical history, and other diagnostic tests evaluated by a qualified pathologist. The immunogen is the C-terminal of ANO1. This antibody can recognize isoform1 and isoform2 of human ANO1.

Notable Publications

Author	Pubmed ID	Journal	Application
Dominika A Bijos	25181534	PLoS One	IF
Jingru Sui	32472021	Cell Death Dis	
Yumi Harada	34246954	Biomed Pharmacother	IHC

Storage

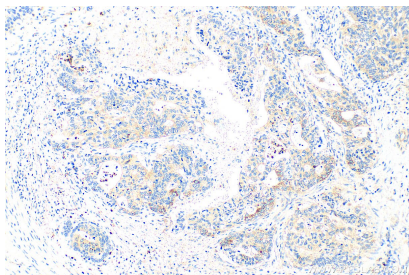
Storage:
Store at -20°C. Stable for one year after shipment.
Storage Buffer:
PBS with 0.02% sodium azide and 50% glycerol pH 7.3.
Aliquoting is unnecessary for -20°C storage

*** 20ul sizes contain 0.1% BSA

For technical support and original validation data for this product please contact:
T: 1 (888) 4PTGLAB (1-888-478-4522) (toll free in USA), or 1(312) 455-8498 (outside USA)
E: proteintech@ptglab.com
W: ptglab.com

This product is exclusively available under Proteintech Group brand and is not available to purchase from any other manufacturer.

Selected Validation Data



Immunohistochemical analysis of paraffin-embedded human stomach cancer tissue slide using 12652-1-AP (TMEM16A/DOG1 antibody) at dilution of 1:500 (under 10x lens). Heat mediated antigen retrieval with Tris-EDTA buffer (pH 9.0).