

For Research Use Only

Kir7.1 Polyclonal antibody

Catalog Number: 12657-1-AP

1 Publications



Basic Information

Catalog Number:

12657-1-AP

Size:

150ul, Concentration: 550 ug/ml by Nanodrop;

Source:

Rabbit

Isotype:

IgG

Immunogen Catalog Number:

AG3327

GenBank Accession Number:

BC037290

GeneID (NCBI):

3769

UNIPROT ID:

O60928

Full Name:

potassium inwardly-rectifying channel, subfamily J, member 13

Calculated MW:

360 aa, 43 kDa

Observed MW:

43 kDa

Purification Method:

Antigen affinity purification

Recommended Dilutions:

WB 1:200-1:1000

IHC 1:20-1:200

Applications

Tested Applications:

WB, IHC, ELISA

Cited Applications:

IHC

Species Specificity:

human

Cited Species:

human

Note-IHC: suggested antigen retrieval with TE buffer pH 9.0; (*) Alternatively, antigen retrieval may be performed with citrate buffer pH 6.0

Positive Controls:

WB : human brain tissue, human kidney tissue

IHC : human small intestine tissue,

Background Information

Kir7.1, encoded by KCNJ13 gene, is a member of the inwardly rectifying potassium channel family of proteins. Kir7.1 is a low-conductance channel. At mRNA level, Kir7.1 is predominantly expressed in small intestine and also expressed in stomach, kidney, and brain. Mutations in KCNJ13 gene are associated with snowflake vitreoretinal degeneration.

Notable Publications

Author	Pubmed ID	Journal	Application
Shishuai Wen	34693452	Acta Biochim Biophys Sin (Shanghai)	IHC

Storage

Storage:

Store at -20°C. Stable for one year after shipment.

Storage Buffer:

PBS with 0.02% sodium azide and 50% glycerol pH 7.3.

Aliquoting is unnecessary for -20°C storage

*** 20ul sizes contain 0.1% BSA

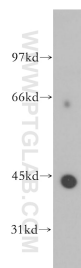
For technical support and original validation data for this product please contact:

T: 1 (888) 4PTGLAB (1-888-478-4522) (toll free in USA), or 1(312) 455-8498 (outside USA)

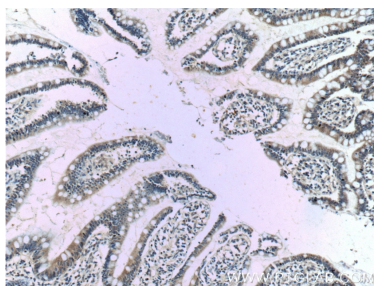
E: proteintech@ptglab.com
W: ptglab.com

This product is exclusively available under Proteintech Group brand and is not available to purchase from any other manufacturer.

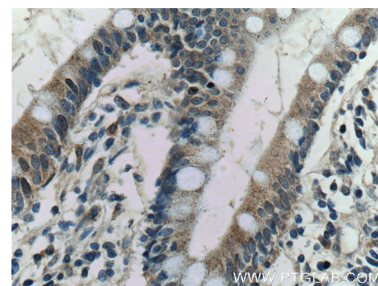
Selected Validation Data



human brain tissue were subjected to SDS PAGE followed by western blot with 12657-1-AP (Kir7.1 antibody) at dilution of 1:300 incubated at room temperature for 1.5 hours.



Immunohistochemical analysis of paraffin-embedded human small intestine tissue slide using 12657-1-AP (Kir7.1 antibody at dilution of 1:50 (under 10x lens).



Immunohistochemical analysis of paraffin-embedded human small intestine tissue slide using 12657-1-AP (Kir7.1 antibody at dilution of 1:50 (under 40x lens).