

For Research Use Only

FOSL1 Polyclonal antibody, PBS Only

Catalog Number:12663-1-PBS



Basic Information

| | | |
|---|--|--|
| Catalog Number: 12663-1-PBS | GenBank Accession Number: BC016648 | Purification Method: Antigen affinity purification |
| Size: 100ug , Concentration: 1 mg/ml by Nanodrop; | GeneID (NCBI): 8061 | |
| Source: Rabbit | UNIPROT ID: P15407 | |
| Isotype: IgG | Full Name: FOS-like antigen 1 | |
| Immunogen Catalog Number: AG3344 | Calculated MW: 271 aa, 29 kDa | |
| | Observed MW: 30-40 kDa | |

Applications

Tested Applications:
WB, IF/ICC, Indirect ELISA

Species Specificity:
human

Background Information

FOSL1 (FOS Like 1, AP-1 Transcription Factor Subunit) is a protein-coding gene that produces the Fos-related antigen 1 (FRA1) protein, a key component of the AP-1 transcription factor complex. It is heavily involved in regulating cell proliferation, differentiation, tumorigenesis, and metastasis, particularly in cancers like lung, pancreatic, and breast cancer. FOSL1 forms heterodimers with JUN family proteins to form the AP-1 complex, which binds to DNA to regulate gene expression. It is considered an oncologist in many solid tumors, driving metastasis, EMT, and resistance to chemotherapy and radiotherapy. High expression of FOSL1 is associated with poor prognosis and tumor aggressiveness. It is often found in the stroma of reproductive tissues, cartilage, and in tumor microenvironments.

Storage

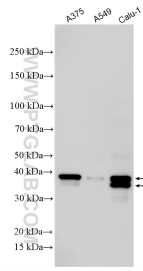
Storage:
Store at -80°C.

Storage Buffer:
PBS only, pH7.3

For technical support and original validation data for this product please contact:
T: 1 (888) 4PTGLAB (1-888-478-4522) (toll free in USA), or 1(312) 455-8498 (outside USA) E: proteintech@ptglab.com
W: ptglab.com

This product is exclusively available under Proteintech Group brand and is not available to purchase from any other manufacturer.

Selected Validation Data



Various lysates were subjected to SDS PAGE followed by western blot with 12663-1-AP (FOSL1 antibody) at dilution of 1:1000 incubated at room temperature for 1.5 hours. This data was developed using the same antibody clone with 12663-1-PBS in a different storage buffer formulation.