

For Research Use Only

# IMP5 Polyclonal antibody, PBS Only

Catalog Number: 12664-1-PBS



## Basic Information

**Catalog Number:**

12664-1-PBS

**Size:**

100ug, Concentration: 1 mg/ml by Nanodrop;

**Source:**

Rabbit

**Isotype:**

IgG

**Immunogen Catalog Number:**

AG3345

**GenBank Accession Number:**

BC025401

**GeneID (NCBI):**

162540

**UNIPROT ID:**

Q8IUH8

**Full Name:**

intramembrane protease 5

**Calculated MW:**

684 aa, 74 kDa

**Observed MW:**

74 kDa

**Purification Method:**

Antigen affinity purification

## Applications

**Tested Applications:**

WB, IHC, IF/ICC, IP, Indirect ELISA

**Species Specificity:**

human

## Storage

**Storage:**

Store at -80°C.

**Storage Buffer:**

PBS only, pH7.3

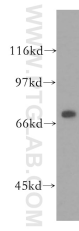
For technical support and original validation data for this product please contact:

T: 1 (888) 4PTGLAB (1-888-478-4522) (toll free in USA), or 1(312) 455-8498 (outside USA)

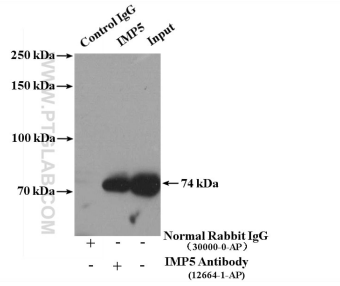
E: [proteintech@ptglab.com](mailto:proteintech@ptglab.com)  
W: [ptglab.com](http://ptglab.com)

This product is exclusively available under Proteintech Group brand and is not available to purchase from any other manufacturer.

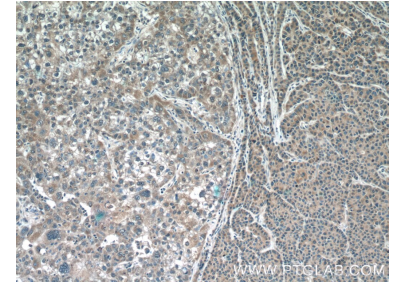
## Selected Validation Data



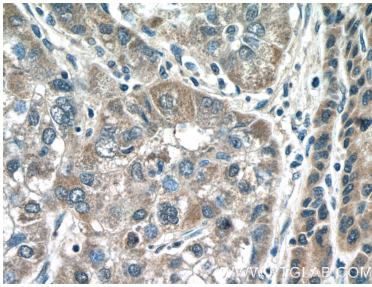
HEK-293 cells were subjected to SDS PAGE followed by western blot with 12664-1-AP (IMP5 antibody) at dilution of 1:500 incubated at room temperature for 1.5 hours. This data was developed using the same antibody clone with 12664-1-PBS in a different storage buffer formulation.



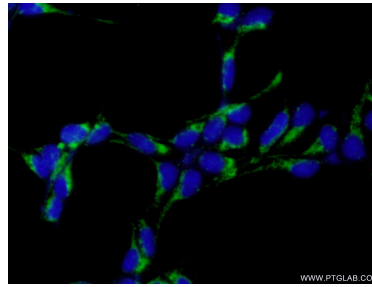
IP result of anti-IMP5 (IP:12664-1-AP, 4ug; Detection:12664-1-AP 1:500) with HEK-293 cells lysate 3600ug. This data was developed using the same antibody clone with 12664-1-PBS in a different storage buffer formulation.



Immunohistochemical analysis of paraffin-embedded human liver cancer tissue slide using 12664-1-AP (IMP5 Antibody) at dilution of 1:50 (under 10x lens). This data was developed using the same antibody clone with 12664-1-PBS in a different storage buffer formulation.



Immunohistochemical analysis of paraffin-embedded human liver cancer tissue slide using 12664-1-AP (IMP5 Antibody) at dilution of 1:50 (under 40x lens). This data was developed using the same antibody clone with 12664-1-PBS in a different storage buffer formulation.



Immunofluorescent analysis of (-20°C Ethanol) fixed HEK-293 cells using 12664-1-AP (IMP5 antibody) at dilution of 1:50 and Alexa Fluor 488-conjugated AffiniPure Goat Anti-Rabbit IgG(H+L). This data was developed using the same antibody clone with 12664-1-PBS in a different storage buffer formulation.