

For Research Use Only

CPEB3 Polyclonal antibody

Catalog Number: 12669-1-AP

1 Publications



Basic Information

Catalog Number:

12669-1-AP

Size:

150ul, Concentration: 300 ug/ml by Nanodrop and 267 ug/ml by Bradford method using BSA as the standard;

Source:

Rabbit

Isotype:

IgG

Immunogen Catalog Number:

AG3351

GenBank Accession Number:

BC036444

GeneID (NCBI):

22849

UNIPROT ID:

Q8NE35

Full Name:

cytoplasmic polyadenylation element binding protein 3

Calculated MW:

697 aa, 76 kDa

Observed MW:

76-80 kDa

Purification Method:

Antigen affinity purification

Recommended Dilutions:

WB 1:500-1:1000

IHC 1:50-1:500

IF-P 1:50-1:500

Applications

Tested Applications:

WB, IHC, IF-P, ELISA

Cited Applications:

WB

Species Specificity:

human, mouse, rat

Cited Species:

human

Positive Controls:

WB : mouse brain tissue, rat brain tissue

IHC : mouse brain tissue,

IF-P : mouse brain tissue,

Note-IHC: suggested antigen retrieval with TE buffer pH 9.0; (*) Alternatively, antigen retrieval may be performed with citrate buffer pH 6.0

Background Information

CPEB3, the cytoplasmic polyadenylation element-binding protein 3, contains a Q/N-rich domain at its N-termina which is required for the aggregation of CPEB3. The expression of CPEB3 is downregulated in cervical cancer and hepatocellular carcinoma compared with normal tissue. It has been reported that the aggregation and activity of CPEB3 is controlled by SUMOylation. CPEB3 is SUMOylated in hippocampal neurons in the basal state while converted into an active form which is associated with a decrease of SUMOylation and an increase of aggregation. CPEB3 is expressed in cytoplasm in unstimulated neurons but translocates to the nucleus following neuronal stimulation.

Notable Publications

| Author | Pubmed ID | Journal | Application |
|---------|-----------|--------------|-------------|
| Ke Miao | 32454494 | Pharmacology | WB |

Storage

Storage:

Store at -20°C. Stable for one year after shipment.

Storage Buffer:

PBS with 0.02% sodium azide and 50% glycerol pH 7.3.

Aliquoting is unnecessary for -20°C storage

*** 20ul sizes contain 0.1% BSA

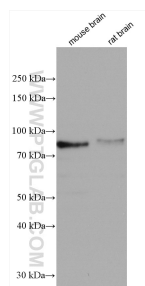
For technical support and original validation data for this product please contact:

T: 1 (888) 4PTGLAB (1-888-478-4522) (toll free in USA), or 1(312) 455-8498 (outside USA)

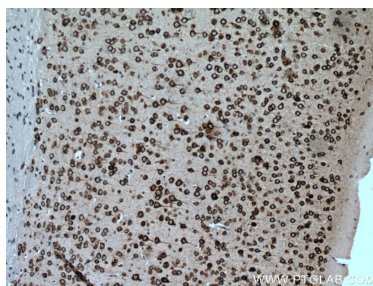
E: proteintech@ptglab.com
W: ptglab.com

This product is exclusively available under Proteintech Group brand and is not available to purchase from any other manufacturer.

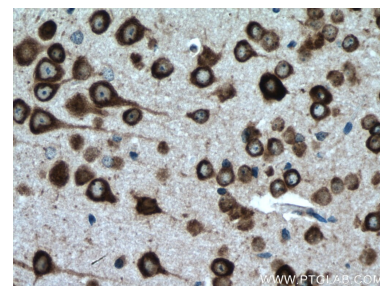
Selected Validation Data



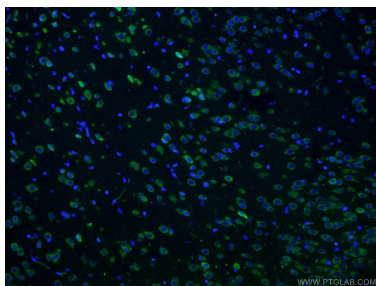
Various lysates were subjected to SDS PAGE followed by western blot with 12669-1-AP (CPEB3 antibody) at dilution of 1:600 incubated at room temperature for 1.5 hours.



Immunohistochemical analysis of paraffin-embedded mouse brain tissue slide using 12669-1-AP (CPEB3 antibody) at dilution of 1:200 (under 10x lens). Heat mediated antigen retrieval with Tris-EDTA buffer (pH 9.0).



Immunohistochemical analysis of paraffin-embedded mouse brain tissue slide using 12669-1-AP (CPEB3 antibody) at dilution of 1:200 (under 40x lens). Heat mediated antigen retrieval with Tris-EDTA buffer (pH 9.0).



Immunofluorescent analysis of (4% PFA) fixed mouse brain tissue using 12669-1-AP (CPEB3 antibody) at dilution of 1:50 and Coralite488-Conjugated Goat Anti-Rabbit IgG(H+L).