

For Research Use Only

MAD2L2 Polyclonal antibody

Catalog Number: 12683-1-AP

Featured Product

18 Publications



Basic Information

Catalog Number:

12683-1-AP

Size:

150ul, Concentration: 400 ug/ml by Nanodrop;

Source:

Rabbit

Isotype:

IgG

Immunogen Catalog Number:

AG3373

GenBank Accession Number:

BC015244

GeneID (NCBI):

10459

UNIPROT ID:

Q9UI95

Full Name:

MAD2 mitotic arrest deficient-like 2 (yeast)

Calculated MW:

211 aa, 24 kDa

Observed MW:

24 kDa

Purification Method:

Antigen affinity purification

Recommended Dilutions:

WB 1:500-1:2400

IP 0.5-4.0 ug for 1.0-3.0 mg of total protein lysate

IHC 1:50-1:500

Applications

Tested Applications:

WB, IP, IHC, ELISA

Cited Applications:

WB, IHC, IF, IP

Species Specificity:

human, mouse, rat

Cited Species:

human, mouse

Positive Controls:

WB : human brain tissue, A375 cells, fetal HEK-293 cells, HeLa cells, human colon tissue, human kidney tissue, K-562 cells, mouse brain tissue

IP : mouse brain tissue,

IHC : human ovary tumor tissue, human lymphoma tissue

Note-IHC: suggested antigen retrieval with TE buffer pH 9.0; (*) Alternatively, antigen retrieval may be performed with citrate buffer pH 6.0

Background Information

MAD family, together with BUB and Mps1, Cdc20k, play roles in the mitotic spindle checkpoint. MAD2L2 is one of the MAD family. It can mediate the second polymerase switching in translation DNA synthesis by mediating the interaction between the error-prone DNA polymerase zeta catalytic subunit REV3L and the inserter polymerase REV1. Through regulation of the JNK-mediated phosphorylation and activation of the transcriptional activator ELK1, MAD2L2 involves in cellular response to DNA damage. Also it has role in the progression of cell cycle and peithelial-mesenchymal transdifferentiation.

Notable Publications

Author	Pubmed ID	Journal	Application
Inge de Krijger	34521823	Nat Commun	WB
Dian Bao	34803506	Int J Biol Sci	WB, IF, IHC
Tamar Listovsky	24100295	J Cell Biol	WB, IP

Storage

Storage:

Store at -20°C. Stable for one year after shipment.

Storage Buffer:

PBS with 0.02% sodium azide and 50% glycerol pH 7.3.

Aliquoting is unnecessary for -20°C storage

*** 20ul sizes contain 0.1% BSA

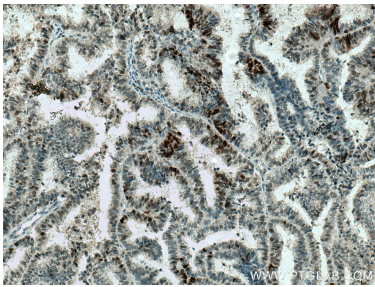
For technical support and original validation data for this product please contact:

T: 1 (888) 4PTGLAB (1-888-478-4522) (toll free in USA), or 1(312) 455-8498 (outside USA)

E: proteintech@ptglab.com
W: ptglab.com

This product is exclusively available under Proteintech Group brand and is not available to purchase from any other manufacturer.

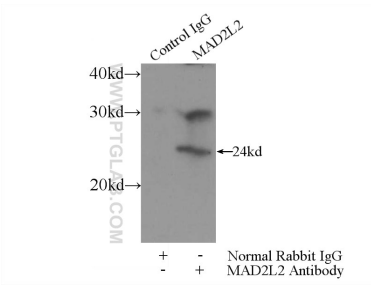
Selected Validation Data



Immunohistochemical analysis of paraffin-embedded human ovary tumor tissue slide using 12683-1-AP (MAD2L2 antibody) at dilution of 1:200 (under 10x lens). Heat mediated antigen retrieval with Tris-EDTA buffer (pH 9.0).



human brain tissue were subjected to SDS PAGE followed by western blot with 12683-1-AP (MAD2L2 antibody) at dilution of 1:500 incubated at room temperature for 1.5 hours.



IP result of anti-MAD2L2 (IP:12683-1-AP, 3ug; Detection:12683-1-AP 1:500) with mouse brain tissue lysate 3600ug.