

For Research Use Only

Kallikrein 11 Polyclonal antibody

Catalog Number: 12698-1-AP



Basic Information

Catalog Number: 12698-1-AP	GenBank Accession Number: BC022068	Purification Method: Antigen affinity purification
Size: 150ul , Concentration: 700 µg/ml by Nanodrop and 480 µg/ml by Bradford method using BSA as the standard;	GeneID (NCBI): 11012	Recommended Dilutions: WB 1:500-1:2000 IHC 1:20-1:200 IF 1:10-1:100
Source: Rabbit	Full Name: kallikrein-related peptidase 11	
Isotype: IgG	Calculated MW: 250 aa, 27 kDa	
Immunogen Catalog Number: AG3427	Observed MW: 30-40 kDa	

Applications

Tested Applications: IF, IHC, WB, ELISA	Positive Controls: WB : MCF7 cells, HeLa cells, PC-3 cells, Y79 cells IHC : human prostate cancer tissue, human brain tissue IF : PC-3 cells,
Species Specificity: human, mouse, rat	
Note-IHC: suggested antigen retrieval with TE buffer pH 9.0; (*) Alternatively, antigen retrieval may be performed with citrate buffer pH 6.0	

Background Information

KLK11(Kallikrein-11) is also named as PRSS20, TLSP and belongs to the peptidase S1 family and Kallikrein subfamily. It is a multifunctional protease cleaving several substrates for kallikrein and trypsin and involved in normal physiology processes in bronchus. This full length protein has a signal peptide, a propeptide and four glycosylation sites. It has 4 isoforms produced by alternative splicing with the molecular weight of 31 kDa, 27 kDa, 34 kDa and 30 kDa.

Storage

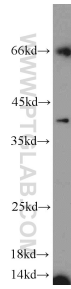
Storage:
Store at -20°C. Stable for one year after shipment.
Storage Buffer:
PBS with 0.02% sodium azide and 50% glycerol pH 7.3.
Aliquoting is unnecessary for -20°C storage

*** 20ul sizes contain 0.1% BSA

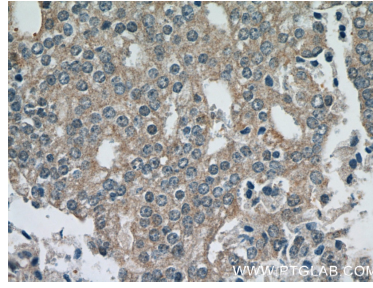
For technical support and original validation data for this product please contact:
T: 1 (888) 4PTGLAB (1-888-478-4522) (toll free in USA), or 1(312) 455-8498 (outside USA)
E: proteintech@ptglab.com
W: ptglab.com

This product is exclusively available under Proteintech Group brand and is not available to purchase from any other manufacturer.

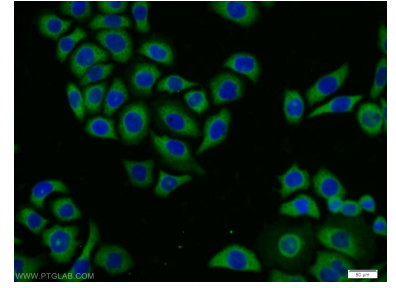
Selected Validation Data



MCF7 cells were subjected to SDS PAGE followed by western blot with 12698-1-AP (Kallikrein 11 antibody) at dilution of 1:1000 incubated at room temperature for 1.5 hours.



Immunohistochemical analysis of paraffin-embedded human prostate cancer using 12698-1-AP (Kallikrein 11 antibody) at dilution of 1:200 (under 40x lens).



Immunofluorescent analysis of PC-3 cells using 12698-1-AP (Kallikrein 11 antibody) at dilution of 1:25 and Alexa Fluor 488-conjugated AffiniPure Goat Anti-Rabbit IgG(H+L).