

For Research Use Only

KIFAP3 Polyclonal antibody

Catalog Number: 12700-1-AP

Featured Product

2 Publications



Basic Information

Catalog Number: 12700-1-AP	GenBank Accession Number: BC028679	Purification Method: Antigen affinity purification
Size: 150ul , Concentration: 600 µg/ml by Nanodrop and 347 µg/ml by Bradford method using BSA as the standard;	GeneID (NCBI): 22920	Recommended Dilutions: WB 1:500-1:3000 IP 0.5-4.0 ug for 1.0-3.0 mg of total protein lysate IF 1:50-1:500
Source: Rabbit	Full Name: kinesin-associated protein 3	
Isotype: IgG	Calculated MW: 792 aa, 91 kDa	
Immunogen Catalog Number: AG3394	Observed MW: 91-100 kDa	

Applications

Tested Applications: IF, IP, WB, ELISA	Positive Controls:
Cited Applications: WB	WB: human brain tissue, mouse testis tissue, mouse brain tissue, MCF-7 cells
Species Specificity: human, mouse, rat	IP: mouse testis tissue,
Cited Species: human	IF: HepG2 cells,

Background Information

KIFAP3, also known as KIF3AP or KAP3, is a novel KIF3A/3B-associated protein. It binds to the tail domain of KIF3A/3B and may play a role in regulating the binding of KIF3A/3B to cargoes. Recently it has been reported that mutation within the KIFAP3 gene is associated with decreased KIFAP3 expression and increased survival in sporadic ALS, which makes it a potential target for ALS therapy. KIFAP3 has also been identified as the target of mir-130a.

Notable Publications

Author	Pubmed ID	Journal	Application
Christopher Noyes	36653474	Commun Biol	WB
G?ken Joop J	22323518	Nucleic Acids Res	WB

Storage

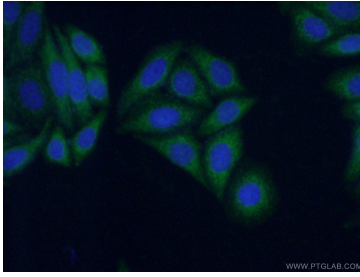
Storage:
Store at -20°C. Stable for one year after shipment.
Storage Buffer:
PBS with 0.02% sodium azide and 50% glycerol pH 7.3.
Aliquoting is unnecessary for -20°C storage

*** 20ul sizes contain 0.1% BSA

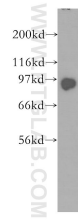
For technical support and original validation data for this product please contact:
T: 1 (888) 4PTGLAB (1-888-478-4522) (toll free in USA), or 1(312) 455-8498 (outside USA)
E: proteintech@ptglab.com
W: ptglab.com

This product is exclusively available under Proteintech Group brand and is not available to purchase from any other manufacturer.

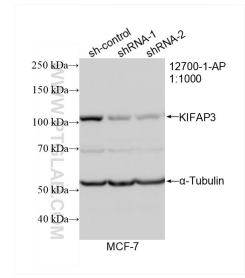
Selected Validation Data



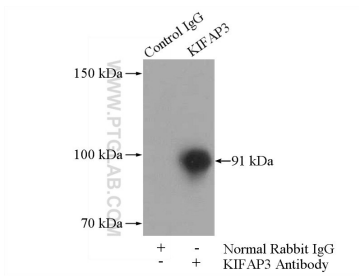
Immunofluorescent analysis of (-20°C Ethanol) fixed HepG2 cells using 12700-1-AP (KIFAP3 antibody) at dilution of 1:50 and Alexa Fluor 488-conjugated AffiniPure Goat Anti-Rabbit IgG(H+L).



human brain tissue were subjected to SDS PAGE followed by western blot with 12700-1-AP (KIFAP3 antibody) at dilution of 1:600 incubated at room temperature for 1.5 hours.



WB result of KIFAP3 antibody (12700-1-AP; 1:1000; incubated at room temperature for 1.5 hours) with sh-Control and sh-KIFAP3 transfected MCF-7 cells.



IP Result of anti-KIFAP3 (IP:12700-1-AP, 4ug; Detection:12700-1-AP 1:500) with mouse testis tissue lysate 4000ug.