

For Research Use Only

# BMPR1A Polyclonal antibody, PBS Only

Catalog Number: 12702-1-PBS

Featured Product



## Basic Information

**Catalog Number:**

12702-1-PBS

**Size:**

100ug, Concentration: 1 mg/ml by Nanodrop;

**Source:**

Rabbit

**Isotype:**

IgG

**Immunogen Catalog Number:**

AG3410

**GenBank Accession Number:**

BC028383

**GeneID (NCBI):**

657

**UNIPROT ID:**

P36894

**Full Name:**

bone morphogenetic protein receptor, type IA

**Calculated MW:**

532 aa, 60 kDa

**Observed MW:**

60-68 kDa

**Purification Method:**

Antigen affinity purification

## Applications

**Tested Applications:**

WB, IF/ICC, IP, Indirect ELISA

**Species Specificity:**

human, mouse

## Storage

**Storage:**

Store at -80°C.

**Storage Buffer:**

PBS only, pH7.3

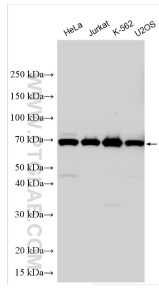
For technical support and original validation data for this product please contact:

T: 1 (888) 4PTGLAB (1-888-478-4522) (toll free in USA), or 1(312) 455-8498 (outside USA)

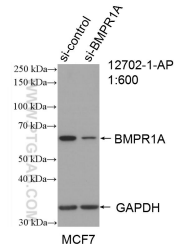
E: [proteintech@ptglab.com](mailto:proteintech@ptglab.com)  
W: [ptglab.com](http://ptglab.com)

This product is exclusively available under Proteintech Group brand and is not available to purchase from any other manufacturer.

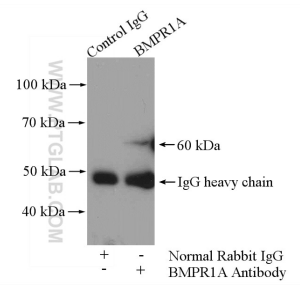
## Selected Validation Data



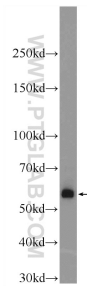
Various lysates were subjected to SDS PAGE followed by western blot with 12702-1-AP (BMPR1A antibody) at dilution of 1:1000 incubated at room temperature for 1.5 hours. This data was developed using the same antibody clone with 12702-1-PBS in a different storage buffer formulation.



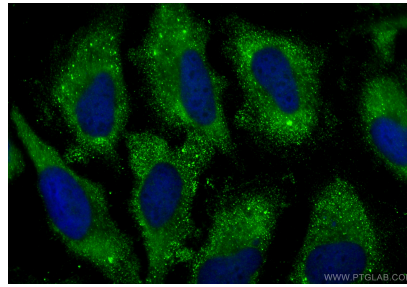
WB result of BMPR1A antibody (12702-1-AP; 1:600; incubated at room temperature for 1.5 hours) with sh-Control and sh-BMPR1A transfected MCF-7 cells. This data was developed using the same antibody clone with 12702-1-PBS in a different storage buffer formulation.



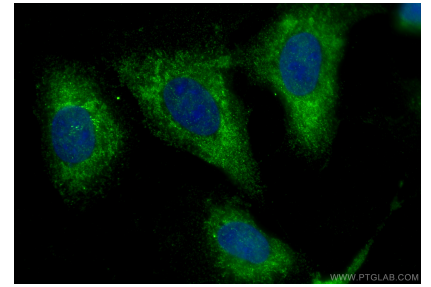
IP result of anti-BMPR1A (IP:12702-1-AP, 4ug; Detection:12702-1-AP 1:500) with HEK-293 cells lysate 2000ug. This data was developed using the same antibody clone with 12702-1-PBS in a different storage buffer formulation.



human skeletal muscle tissue were subjected to SDS PAGE followed by western blot with 12702-1-AP (BMPR1A Antibody) at dilution of 1:1000 incubated at room temperature for 1.5 hours. This data was developed using the same antibody clone with 12702-1-PBS in a different storage buffer formulation.



Immunofluorescent analysis of (-20°C Ethanol) fixed HeLa cells using BMPR1A antibody (12702-1-AP) at dilution of 1:400 and CoraLite®488-Conjugated Goat Anti-Rabbit IgG(H+L) (SA00013-2). This data was developed using the same antibody clone with 12702-1-PBS in a different storage buffer formulation.



Immunofluorescent analysis of (-20°C Ethanol) fixed U2OS cells using BMPR1A antibody (12702-1-AP) at dilution of 1:400 and CoraLite®488-Conjugated Goat Anti-Rabbit IgG(H+L) (SA00013-2). This data was developed using the same antibody clone with 12702-1-PBS in a different storage buffer formulation.