

For Research Use Only

TRAM1 Polyclonal antibody

Catalog Number: 12705-1-AP **2 Publications**



Basic Information

| | | |
|--|--|---|
| Catalog Number: 12705-1-AP | GenBank Accession Number: BC037738 | Purification Method: Antigen affinity purification |
| Size: 150ul , Concentration: 400 µg/ml by Nanodrop and 267 µg/ml by Bradford method using BSA as the standard; | GeneID (NCBI): 23471 | Recommended Dilutions: WB 1:500-1:2000 IHC 1:20-1:200 IF 1:10-1:100 |
| Source: Rabbit | Full Name: translocation associated membrane protein 1 | |
| Isotype: IgG | Calculated MW: 374 aa, 43 kDa | |
| Immunogen Catalog Number: AG3384 | Observed MW: 43 kDa | |

Applications

| | |
|---|--|
| Tested Applications: IF, IHC, WB, ELISA | Positive Controls: WB : K-562 cells, HeLa cells, Jurkat cells, PC-3 cells IHC : human prostate cancer tissue, IF : PC-3 cells, |
| Cited Applications: WB | |
| Species Specificity: human, mouse, rat | |
| Cited Species: mouse, rat | |

Note-IHC: suggested antigen retrieval with TE buffer pH 9.0; (*) Alternatively, antigen retrieval may be performed with citrate buffer pH 6.0

Background Information

Notable Publications

| Author | Pubmed ID | Journal | Application |
|-------------|-----------|------------------------------------|-------------|
| Sairong Fan | 34658894 | Front Pharmacol | WB |
| Boxun Zhang | 33224253 | Evid Based Complement Alternat Med | WB |

Storage

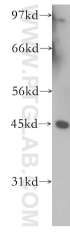
Storage:
Store at -20°C. Stable for one year after shipment.
Storage Buffer:
PBS with 0.02% sodium azide and 50% glycerol pH 7.3.
Aliquoting is unnecessary for -20°C storage

***** 20ul sizes contain 0.1% BSA**

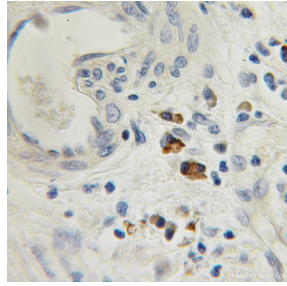
For technical support and original validation data for this product please contact:
T: 1 (888) 4PTGLAB (1-888-478-4522) (toll free in USA), or 1(312) 455-8498 (outside USA)
E: proteintech@ptglab.com
W: ptglab.com

This product is exclusively available under Proteintech Group brand and is not available to purchase from any other manufacturer.

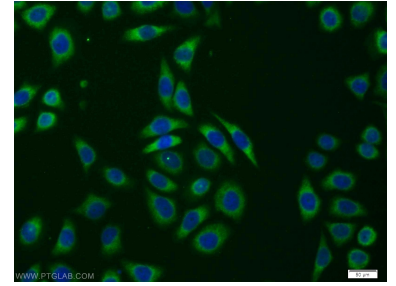
Selected Validation Data



K-562 cells were subjected to SDS PAGE followed by western blot with 12705-1-AP (TRAM1 antibody) at dilution of 1:300 incubated at room temperature for 1.5 hours.



Immunohistochemical analysis of paraffin-embedded human prostate cancer using 12705-1-AP (TRAM1 antibody) at dilution of 1:50 (under 10x lens).



Immunofluorescent analysis of PC-3 cells using 12705-1-AP (TRAM1 antibody) at dilution of 1:25 and Alexa Fluor 488-conjugated AffiniPure Goat Anti-Rabbit IgG(H+L).