

For Research Use Only

GCNF Polyclonal antibody

Catalog Number: 12712-1-AP

Featured Product

3 Publications



Basic Information

Catalog Number: 12712-1-AP	GenBank Accession Number: BC030600	Purification Method: Antigen affinity purification
Size: 150ul, Concentration: 147 µg/ml by Nanodrop and 147 µg/ml by Bradford method using BSA as the standard;	GeneID (NCBI): 2649	Recommended Dilutions: WB 1:500-1:2000 IP 0.5-4.0 ug for IP and 1:500-1:1000 for WB
Source: Rabbit	Full Name: nuclear receptor subfamily 6, group A, member 1	Observed MW: 54 kDa
Isotype: IgG	Calculated MW: 475 aa, 54 kDa	
Immunogen Catalog Number: AG3395		

Applications

Tested Applications: IHC, IP, WB, ELISA	Positive Controls: WB : PC-3 cells, K-562 cells, mouse testis tissue
Cited Applications: IF, IHC, WB	IP : mouse testis tissue,
Species Specificity: human, mouse, rat	IHC : human testis tissue,
Cited Species: human, mouse	

Note-IHC: suggested antigen retrieval with TE buffer pH 9.0; (*) Alternatively, antigen retrieval may be performed with citrate buffer pH 6.0

Background Information

NR6A1 (Nuclear Receptor Subfamily 6 Group A member), also known as GCNF (Germ Cell Nuclear Factor), is an orphan member of the nuclear receptor gene superfamily. It has been shown to be expressed in the nervous system during development and during specific stages in maturing germ cells of the ovary and testis in the adult, and has probable roles in gametogenesis, neurogenesis, and normal embryonic development during gastrulation. Inactivation of GCNF in mouse results in abnormal posterior development, impaired midbrain development, insufficient closure of the neural tube, and eventual embryonic death. GCNF has been shown to be a repressor of OCT-4 and plays a critical role in the control of gene expression during embryogenesis and spermatogenesis. This antibody specifically reacts with the 55kd NR6A1 protein.

Notable Publications

Author	Pubmed ID	Journal	Application
Zhong-Hua Lin	36304495	J Clin Transl Hepatol	WB
Xiaowen Liu	33034957	Cancer Med	IHC
Pingping Tan	35183538	Neuropharmacology	WB,IF

Storage

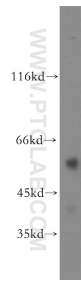
Storage:
Store at -20°C. Stable for one year after shipment.
Storage Buffer:
PBS with 0.02% sodium azide and 50% glycerol pH 7.3.
Aliquoting is unnecessary for -20°C storage

*** 20ul sizes contain 0.1% BSA

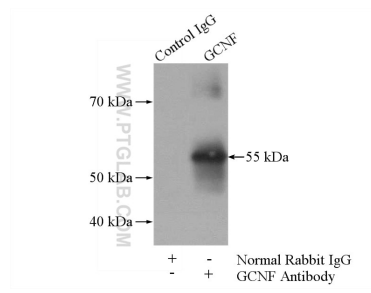
For technical support and original validation data for this product please contact:
T: 1 (888) 4PTGLAB (1-888-478-4522) (toll free in USA), or 1(312) 455-8498 (outside USA)
E: proteintech@ptglab.com
W: ptglab.com

This product is exclusively available under Proteintech Group brand and is not available to purchase from any other manufacturer.

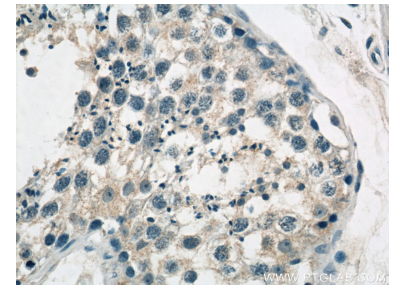
Selected Validation Data



PC-3 cells were subjected to SDS PAGE followed by western blot with 12712-1-AP (GCNF antibody) at dilution of 1:300 incubated at room temperature for 1.5 hours.



IP Result of anti-GCNF (IP:12712-1-AP, 4ug; Detection:12712-1-AP 1:800) with mouse testis tissue lysate 4000ug.



Immunohistochemical analysis of paraffin-embedded human testis tissue slide using 12712-1-AP (GCNF antibody at dilution of 1:50 (under 40x lens)).