

For Research Use Only

TROVE2 Polyclonal antibody

Catalog Number: 12718-1-AP **1 Publications**



Basic Information

Catalog Number: 12718-1-AP	GenBank Accession Number: BC036658	Purification Method: Antigen affinity purification
Size: 150ul , Concentration: 170 µg/ml by Nanodrop and 133 µg/ml by Bradford method using BSA as the standard;	GeneID (NCBI): 6738	Recommended Dilutions: WB 1:500-1:3000 IF 1:10-1:100
Source: Rabbit	Full Name: TROVE domain family, member 2	
Isotype: IgG	Calculated MW: 60 kDa	
Immunogen Catalog Number: AG3412	Observed MW: 60 kDa	

Applications

Tested Applications: IF, WB, ELISA	Positive Controls: WB : MCF7 cells, HeLa cells, mouse thymus tissue, PC-3 cells, rat spleen tissue
Cited Applications: WB	IF : PC-3 cells,
Species Specificity: human, mouse, rat	
Cited Species: human	

Background Information

TROVE2, also named as RO60 or RoRNP, is a 538 amino acid protein, which is localized in cytoplasmic mRNP granules containing untranslated mRNAs. TROVE2 as a RNA-binding protein that binds to misfolded non-coding RNAs, pre-5S rRNA, and several small cytoplasmic RNA molecules known as Y RNAs. TROVE2 may stabilize some of these RNAs and protect them from degradation (PubMed:18056422). TROVE2 binds to endogenous Alu retroelements which are induced by type I IFN and stimulate porinflammatoary cytokine secretion.

Notable Publications

Author	Pubmed ID	Journal	Application
Chuang Li	35410432	J Exp Clin Cancer Res	WB

Storage

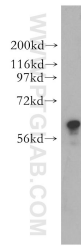
Storage:
Store at -20°C. Stable for one year after shipment.
Storage Buffer:
PBS with 0.02% sodium azide and 50% glycerol pH 7.3.
Aliquoting is unnecessary for -20°C storage

*** 20ul sizes contain 0.1% BSA

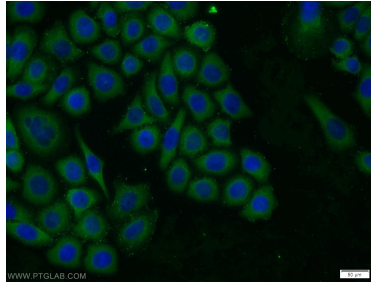
For technical support and original validation data for this product please contact:
T: 1 (888) 4PTGLAB (1-888-478-4522) (toll free in USA), or 1(312) 455-8498 (outside USA)
E: proteintech@ptglab.com
W: ptglab.com

This product is exclusively available under Proteintech Group brand and is not available to purchase from any other manufacturer.

Selected Validation Data



MCF7 cells were subjected to SDS PAGE followed by western blot with 12718-1-AP (TROVE2 antibody) at dilution of 1:500 incubated at room temperature for 1.5 hours.



Immunofluorescent analysis of PC-3 cells using 12718-1-AP (TROVE2 antibody) at dilution of 1:25 and Alexa Fluor 488-conjugated AffiniPure Goat Anti-Rabbit IgG(H+L).